

Recombinant Human CPXM1 Protein, GST-tagged

Cat. No. CPXM1-1825H Lot. No. (See product label)

SPECIFICATION

Product Overview	Human CPXM1 full-length ORF (AAH63430.1, 1 a.a. - 734 a.a.) recombinant protein with GST-tag at N-terminal.
Species	Human
Source	Wheat Germ
Description	This gene likely encodes a member of the carboxypeptidase family of proteins. Cloning of a comparable locus in mouse indicates that the encoded protein contains a discoidin domain and a carboxypeptidase domain, but the protein appears to lack residues necessary for carboxypeptidase activity.[provided by RefSeq, May 2010]
Molecular Mass	108.1 kDa
AA Sequence	MWGLLLALAAFAPAVGPALGAPRNSVLGLAQPGETTKVPGLTALHSSPAQPPAETA NGTSEQHVIRIRVIKKKKVIMKKRKKLTLTRPTPLVTAGPLVTPTPAGTLDPAEKQETG CPPLGLESRLVSDSRLEASSSQSFGLGPHRGRLNIQSGLEDGDLYDGAWCAEEQD ADPWFQVDAGHPTRFSGVITQGRNSVWRYDWWTSYKVQFSNDSRTWWGSRNHS SGMDAVFPANSDPETPVLNLLPEPQVARFIRLLPQTWLQGGAPCLRAEILACPVSDP NDLFLEAPASGSSDPLDFQHNYKAMRKLKQVQECPNITRIYSIGKSYQGLKLYV MEMSDKPGEHELGEPEVRYVAGMHGNEALGRELLLLLMQFLCHEFLRGNPRVTRL LSEMRIHLLPSMNPDGYEIAYHRGSELVGWAEGRWNNQSIDLNHNFADLNTPLWEA QDDGKVPHIVPNHHLPLPTYYTLPNATVAPETRAVIKWMKRIPFVLSANLHGGELVV SYPFDMTRTPWAARELTPTPDDAVFRWLSTVYAGSNLAMQDTSRRPCHSQDFSVH

 Tel: 1-631-559-9269 1-516-512-3133

 Email: info@creative-biomart.com  Fax: 1-631-938-8127

 45-1 Ramsey Road, Shirley, NY 11967, USA

GNIINGADWHTVPGSMNDFSYLHTNCFEVTVELSCDKFPHENELPQEWENNKDALL
 TYLEQVRMGIAGVVRDKDTELGIADAVIAVDGINHDVTTAWGGDYWRLLTPGDYMV
 TASAEGYHSVTRNCRVTFEEGPFPCNFVLTKTPKQRLRELLAAGAKVPPDLRRRLE
 RLRGQKD

Applications	Enzyme-linked Immunoabsorbent Assay Western Blot (Recombinant protein) Antibody Production Protein Array
Notes	Best use within three months from the date of receipt of this protein.
Storage	Store at -80 centigrade. Aliquot to avoid repeated freezing and thawing.
Storage Buffer	50 mM Tris-HCl, 10 mM reduced Glutathione, pH=8.0 in the elution buffer.

GENE INFORMATION

Gene Name	CPXM1 carboxypeptidase X (M14 family), member 1 [Homo sapiens]
Official Symbol	CPXM1
Synonyms	CPXM1; carboxypeptidase X (M14 family), member 1; carboxypeptidase X (M14 family) , CPXM; probable carboxypeptidase X1; carboxypeptidase like protein X1; CPX 1; CPX1; metallo-carboxypeptidase CPX-1; carboxypeptidase-like protein X1; CPXM;
Gene ID	56265
mRNA Refseq	NM_001184699

 Tel: 1-631-559-9269 1-516-512-3133

 Email: info@creative-biomart.com  Fax: 1-631-938-8127

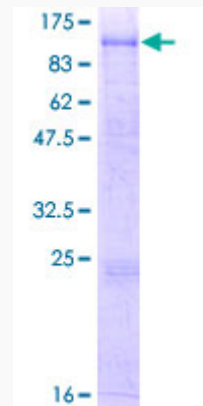
 45-1 Ramsey Road, Shirley, NY 11967, USA

Protein Refseq NP_001171628

MIM 609555

UniProt ID Q96SM3

**Quality Control
Testing:**



12.5% SDS-PAGE Stained with Coomassie Blue.

 Tel: 1-631-559-9269 1-516-512-3133

 Email: info@creative-biomart.com  Fax: 1-631-938-8127

 45-1 Ramsey Road, Shirley, NY 11967, USA