

Recombinant Human CR1 Protein (Met1-Asp1971), C-His tagged

Cat. No. CR1-4018H Lot. No. (See product label)

SPECIFICATION

Product Overview	Recombinant human CR1 (Met1-Asp1971) fused with the C-terminal His tag was expressed in Mammalian cells.
Species	Human
Source	Mammalian Cells
ProteinLength	Met1-Asp1971
Form	Lyophilized powder/frozen liquid
Molecular Mass	216.92 kDa
Endotoxin	< 1.0 EU/μg of the protein as determined by the LAL method.
Purity	>90% as determined by SDS-PAGE.
Notes	For research use only.
Storage	Use a manual defrost freezer and avoid repeated freeze thaw cycles. Store at 2 to 8 centigrade for one week. Store at -20 to -80 centigrade for twelve months from the date of receipt.
Storage Buffer	Supplied as solution form in PBS or lyophilized from PBS.

 Tel: 1-631-559-9269 1-516-512-3133

 Email: info@creative-biomart.com  Fax: 1-631-938-8127

 45-1 Ramsey Road, Shirley, NY 11967, USA

Reconstitution Reconstitute in sterile water for a stock solution.

Shipping They are shipped out with dry ice/blue ice unless customers require otherwise.

GENE INFORMATION

Gene Name CR1 complement component (3b/4b) receptor 1 (Knops blood group) [Homo sapiens (human)]

Official Symbol CR1

Synonyms CR1; complement component (3b/4b) receptor 1 (Knops blood group); complement component (3b/4b) receptor 1, including Knops blood group system; complement receptor type 1; CD35; KN; CD35 antigen; C3b/C4b receptor; C3-binding protein; Knops blood group antigen; complement component receptor 1; C3BR; C4BR;

Gene ID 1378

mRNA Refseq NM_000573

Protein Refseq NP_000564

MIM 120620

UniProt ID P17927

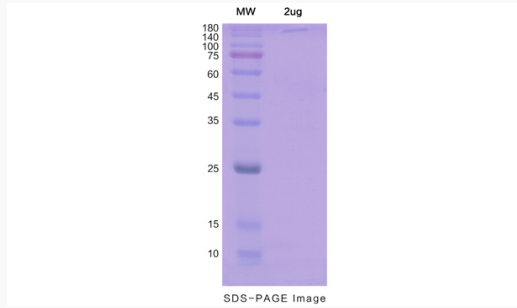
 Tel: 1-631-559-9269 1-516-512-3133

 Email: info@creative-biomart.com  Fax: 1-631-938-8127

 45-1 Ramsey Road, Shirley, NY 11967, USA



SDS-PAGE



Tel: 1-631-559-9269 1-516-512-3133

Email: info@creative-biomart.com Fax: 1-631-938-8127

45-1 Ramsey Road, Shirley, NY 11967, USA