

Recombinant Mouse CR1L Protein (41-405 aa), His-tagged

Cat. No. CR1L-2324M Lot. No. (See product label)

SPECIFICATION

Product Overview	Recombinant Mouse CR1L Protein (41-405 aa) is produced by E. coli expression system. This protein is fused with a 6xHis tag at the N-terminal. Protein Description: Partial.
Species	Mouse
Source	E.coli
ProteinLength	41-405 aa
Description	Acts as a cofactor for complement factor I, a serine protease which protects autologous cells against complement-mediated injury by cleaving C3b and C4b deposited on host tissue. Also acts as a decay-accelerating factor, preventing the formation of C4b2a and C3bBb, the amplification convertases of the complement cascade. Plays a crucial role in early embryonic development by maintaining fetomaternal tolerance. Also acts as a costimulatory factor for T-cells which favors IL-4 secretion.
Form	Tris-based buffer,50% glycerol
Molecular Mass	44.5 kDa
AA Sequence	ELRGGLGKHGHTVHREPAVNRLCADSKRWSGLPVSAQRPFPMGHCPAPSQLPSA KPINLTDESMFPIGTYLLYECLPGYIKRQFSITCKQDSTWTS AEDKCIRKQCKTPSPD ENGLVHVHTGIQFGSRINYTCNQGYRLIGSSSAVCVITDQSV DWDTEA PICEWIPCEI

 Tel: 1-631-559-9269 1-516-512-3133

 Email: info@creative-biomart.com  Fax: 1-631-938-8127

 45-1 Ramsey Road, Shirley, NY 11967, USA

PPGIPNGDFFSSTREDFHYGMVVTYRCNTDARGKALFNLVGEPSTLYCTSNNDGEIGV
 WSGPPPQCIELNKCTPPPYVENAVMLSENRSLSLRDIVEFRCHPGFIMKGASSVHC
 QSLNKWEPELPSCFKGVICRLPQEMSGFQKGLGMKKEYYYGENVTLECEDGYTLE
 GSSQSQSQSDGSWNPLLAKCVSRISG

Purity > 85% as determined by SDS-PAGE.

Notes Repeated freezing and thawing is not recommended. Store working aliquots at 4 centigrade for up to one week.

Storage The shelf life is related to many factors, storage state, buffer ingredients, storage temperature and the stability of the protein itself. Generally, the shelf life of liquid form is 6 months at -20 centigrade/-80 centigrade. The shelf life of lyophilized form is 12 months at -20 centigrade/-80 centigrade.

Concentration A hardcopy of COA will be sent along with the products. Please refer to it for detailed information.

GENE INFORMATION

Gene Name [Cr1l complement component \(3b/4b\) receptor 1-like \[Mus musculus \(house mouse\) \]](#)

Official Symbol [CR1L](#)

Synonyms Cr1l; Mcp; Cr1; mCRY;

Gene ID [12946](#)

mRNA Refseq [NM_013499](#)

Protein Refseq [NP_038527](#)

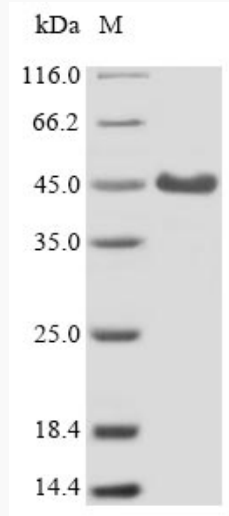
 Tel: 1-631-559-9269 1-516-512-3133

 Email: info@creative-biomart.com  Fax: 1-631-938-8127

 45-1 Ramsey Road, Shirley, NY 11967, USA

UniProt ID

Q64735



(Tris-Glycine gel) Discontinuous SDS-PAGE (reduced) with 5% enrichment gel and 15% separation gel.

Tel: 1-631-559-9269 1-516-512-3133

Email: info@creative-biomart.com Fax: 1-631-938-8127

45-1 Ramsey Road, Shirley, NY 11967, USA