

Recombinant Human CR2 Protein (Lys729-Asp958), N-GST tagged

Cat. No. CR2-1059H Lot. No. (See product label)

SPECIFICATION

Product Overview	Recombinant Human CD21/CR2 (Lys729-Asp958) fused with the N-GST tag was expressed in E. coli.
Species	Human
Source	E.coli
ProteinLength	Lys729-Asp958
Form	Lyophilized powder/frozen liquid
Molecular Mass	52.09 kDa
Purity	>90% as determined by SDS-PAGE.
Notes	For research use only.
Storage	Use a manual defrost freezer and avoid repeated freeze thaw cycles. Store at 2 to 8 centigrade for one week. Store at -20 to -80 centigrade for twelve months from the date of receipt.
Storage Buffer	0.01M PBS, pH 7.4, 0.02% NLS
Reconstitution	Reconstitute in sterile water for a stock solution.

 Tel: 1-631-559-9269 1-516-512-3133

 Email: info@creative-biomart.com  Fax: 1-631-938-8127

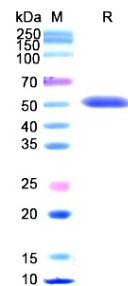
 45-1 Ramsey Road, Shirley, NY 11967, USA

Shipping

They are shipped out with dry ice/blue ice unless customers require otherwise.

GENE INFORMATION

Gene Name	CR2 complement component (3d/Epstein Barr virus) receptor 2 [Homo sapiens (human)]
Official Symbol	CR2
Synonyms	CR2; complement component (3d/Epstein Barr virus) receptor 2; complement receptor type 2; CD21; EBV receptor; complement C3d receptor; epstein-Barr virus receptor; CR; C3DR; SLEB9;
Gene ID	1380
mRNA Refseq	NM_001006658
Protein Refseq	NP_001006659
MIM	120650
UniProt ID	P20023

SDS-PAGE


Tel: 1-631-559-9269 1-516-512-3133

Email: info@creative-biomart.com Fax: 1-631-938-8127

45-1 Ramsey Road, Shirley, NY 11967, USA