

Recombinant Human CR2 Protein, Myc/DDK-tagged, C13 and N15-labeled

Cat. No. CR2-2210H **Lot. No.** (See product label)

SPECIFICATION

Product Overview	CR2 MS Standard C13 and N15-labeled recombinant protein (NP_001868) with a C-terminal MYC/DDK tag, was expressed in HEK293 cells.
Species	Human
Source	HEK293
Description	This gene encodes a membrane protein, which functions as a receptor for Epstein-Barr virus (EBV) binding on B and T lymphocytes. Genetic variations in this gene are associated with susceptibility to systemic lupus erythematosus type 9 (SLEB9). Alternatively spliced transcript variants encoding different isoforms have been found for this gene.
Molecular Mass	113 kDa
AA Sequence	MGAAGLLGVFLALVAPGVLGISCGSPPPILNGRISYYSTPIAVGTVIRYSCSGTFRLLIG EKSLLCITKDKVDGTWDPAPKCEYFNKYSSCPEPIVPGGYKIRGSTPYRHGDSVTF ACKTNFSMNGNKSVMWCQANNMWGPTRLPTCVSVFPLECPALPMIHNGHHTSENV GSIAPGLSVTYSCESGYLLVGEKIINCLSSGKWSAVPPTCEEARCKSLGRFPNGKVK EPPILRVGVTANFFCDEGYRLQGPPSSRCVIAGQGVAVTKMPVCEEIFCPSPPPILN GRHIGNSLANVSYGSIVTYTCDPDPEEGVNFILIGESTLRCTVDSQKTGTWSPAPR CELSTSAVQC PHPQILRGRMVSGQKDRYTYNDTVIFACMFGFTLKGSKQIRCNAQG TWEPSAPVCEKECQAPPNILNGQKEDRHMVRFDPGTSIKYSCNPGYVLVGEESIQC

 Tel: 1-631-559-9269 1-516-512-3133

 Email: info@creative-biomart.com  Fax: 1-631-938-8127

 45-1 Ramsey Road, Shirley, NY 11967, USA

TSEGVWTPPPVQCKVAACEATGRQLLTKPQHQFVRPDVNSSCGEGYKLSGSVYQE
 CQGTIPWFMEIRLCKEITCPPPPVIYNGAHTGSSLEDFPYGTTVYTYTCNPGPERGVE
 FSLIGESTIRCTSNDQERGTWSGPAPLCKLSLLAVQC SHVHIANGYKISGKEAPYFYN
 DTVTFKCYSGFTLKGNSQIRCKADNTWDPEIPVCEKETCQHVRQSLQELPAGSRVE
 LVNTSCQDGYQLTGHAYQMCQDAENGIWFKKIPLCKVIHCHPPPVIVNGKHTGMMA
 ENFLYGNEVSYECDQGFYLLGEKKLQCRSDSKGHGWSWSPQCLRSPVTRCPN
 PEVKHGYKLNKTHSAYSHNDIVYVDCNPGFIMNGSRVIRCHTDNTWVPGVPTCIKKA
 FIGCPPPKTPNGNHTGGNIARFSPGMSILYSCDQGYLLVGEALLLCTHEGTWSQPA
 PHCKEVCNCSSPADMDGIQKGLEPRKMYQYGAVVTLECEDGYMLEGSPQSQCQSD
 HQWNPPLAVCRSRSLAPVLCGIAAGLILLTFLIVITLYVISKHRERNYYTDTSQKEAFH
 LEAREVYSVDPYNPASTRTRPLEQKLISEEDLAANDILDYKDDDDKV

Purity > 80% as determined by SDS-PAGE and Coomassie blue staining

Stability Stable for 3 months from receipt of products under proper storage and handling conditions.

Storage Store at -80 centigrade. Avoid repeated freeze-thaw cycles.

Concentration 50 µg/mL as determined by BCA

Storage Buffer 100 mM glycine, 25 mM Tris-HCl, pH 7.3.

GENE INFORMATION

Gene Name CR2 complement C3d receptor 2 [Homo sapiens (human)]

Official Symbol CR2

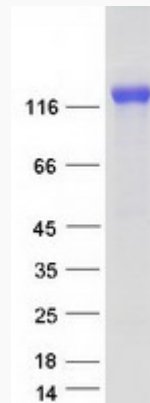
Synonyms CR2; complement component (3d/Epstein Barr virus) receptor 2; complement receptor type 2; CD21; EBV receptor; complement C3d receptor; epstein-Barr virus

 Tel: 1-631-559-9269 1-516-512-3133

 Email: info@creative-biomart.com  Fax: 1-631-938-8127

 45-1 Ramsey Road, Shirley, NY 11967, USA

receptor; CR; C3DR; SLEB9;

Gene ID 1380**mRNA Refseq** NM_001877**Protein Refseq** NP_001868**MIM** 120650**UniProt ID** P20023**SDS-PAGE** Tel: 1-631-559-9269 1-516-512-3133 Email: info@creative-biomart.com  Fax: 1-631-938-8127 45-1 Ramsey Road, Shirley, NY 11967, USA