

Active Recombinant Human CR2 protein, His-tagged

Cat. No. CR2-3186H Lot. No. (See product label)

SPECIFICATION

Product Overview	Active Recombinant Human CR2 protein(P20023-1)(Ile21-Arg971) is expressed from HEK293 with His tag at the C-Terminus.
Species	Human
Source	HEK293
ProteinLength	21-971 aa
Form	Lyophilized from 0.22µm filtered solution in PBS (pH 7.4).
Bio-activity	Immobilized Human CD21, His Tag at 1µg/ml (100µl/Well) on the plate. Dose response curve for Anti-CD21 Antibody, hFc Tag with the EC50 of 2.9ng/ml determined by ELISA.
Molecular Mass	The protein has a predicted MW of 105.3 kDa. Due to glycosylation, the protein migrates to 110-130 kDa based on Bis-Tris PAGE result.
Endotoxin	Less than 1 EU per µg by the LAL method.
Purity	> 95% as determined by Bis-Tris PAGE > 95% as determined by HPLC
Storage	-20 to -80°C for 12 months as supplied from date of receipt. -80°C for 3 months after reconstitution. Recommend to aliquot the protein into smaller quantities for optimal storage. Please minimize freeze-thaw cycles.

 Tel: 1-631-559-9269 1-516-512-3133

 Email: info@creative-biomart.com  Fax: 1-631-938-8127

 45-1 Ramsey Road, Shirley, NY 11967, USA

Reconstitution Dissolve the lyophilized protein in distilled water.

GENE INFORMATION

Gene Name CR2 complement component (3d/Epstein Barr virus) receptor 2 [Homo sapiens]

Official Symbol CR2

Synonyms CR2; complement component (3d/Epstein Barr virus) receptor 2; complement receptor type 2; CD21; EBV receptor; complement C3d receptor; epstein-Barr virus receptor; CR; C3DR; SLEB9;

Gene ID 1380

mRNA Refseq NM_001006658

Protein Refseq NP_001006659

MIM 120650

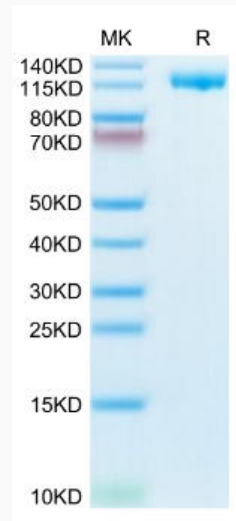
UniProt ID P20023

 Tel: 1-631-559-9269 1-516-512-3133

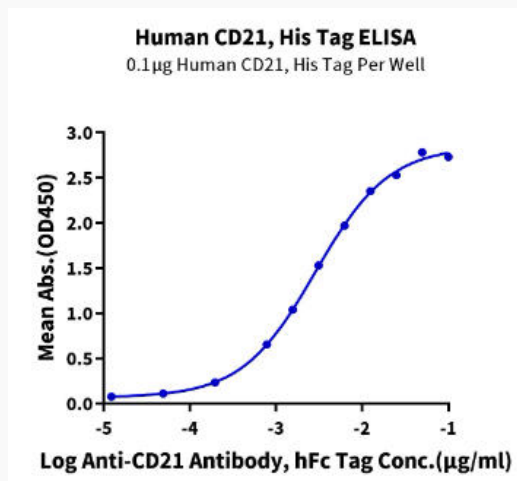
 Email: info@creative-biomart.com  Fax: 1-631-938-8127

 45-1 Ramsey Road, Shirley, NY 11967, USA

Bis-Tris PAGE



ELISA Data



Tel: 1-631-559-9269 1-516-512-3133

Email: info@creative-biomart.com Fax: 1-631-938-8127

45-1 Ramsey Road, Shirley, NY 11967, USA