

Recombinant Human CR2 protein, His-tagged

Cat. No. CR2-3258H Lot. No. (See product label)

SPECIFICATION

Product Overview	Recombinant Human CR2 protein(Phe28~Met248), fused with N-terminal His Tag, was expressed in HEK293.
Species	Human
Source	HEK293
ProteinLength	Phe28~Met248
Form	PBS, pH7.4, containing 0.01% SKL, 1mM DTT, 5% Trehalose and Proclin300.
Molecular Mass	27kDa
Endotoxin	<1.0EU per 1g (determined by the LAL method)
Purity	> 95%
Storage	Avoid repeated freeze/thaw cycles. Store at 2-8°C for one month. Aliquot and store at -80°C for 12 months.
Reconstitution	Reconstitute in 10mM PBS (pH7.4) to a concentration of 0.1-1.0 mg/mL. Do not vortex.

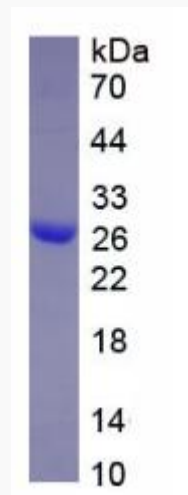
GENE INFORMATION

 Tel: 1-631-559-9269 1-516-512-3133

 Email: info@creative-biomart.com  Fax: 1-631-938-8127

 45-1 Ramsey Road, Shirley, NY 11967, USA

Gene Name	CR2 complement component (3d/Epstein Barr virus) receptor 2 [Homo sapiens]
Official Symbol	CR2
Synonyms	CR2; complement component (3d/Epstein Barr virus) receptor 2; complement receptor type 2; CD21; EBV receptor; complement C3d receptor; epstein-Barr virus receptor; CR; C3DR; SLEB9;
Gene ID	1380
mRNA Refseq	NM_001006658
Protein Refseq	NP_001006659
MIM	120650
UniProt ID	P20023

SDS-PAGE


 Tel: 1-631-559-9269 1-516-512-3133

 Email: info@creative-biomart.com  Fax: 1-631-938-8127

 45-1 Ramsey Road, Shirley, NY 11967, USA