

## Recombinant Human CRABP1 Protein, GST-tagged

Cat. No. CRABP1-1828H Lot. No. (See product label)

### SPECIFICATION

|                         |  |
|-------------------------|--|
| <b>Product Overview</b> | Human CRABP1 full-length ORF ( AAH22069.1, 1 a.a. - 137 a.a.) recombinant protein with GST-tag at N-terminal.  |
| <b>Species</b>          | Human  |
| <b>Source</b>           | Wheat Germ   |
| <b>Description</b>      | This gene encodes a specific binding protein for a vitamin A family member and is thought to play an important role in retinoic acid-mediated differentiation and proliferation processes. It is structurally similar to the cellular retinol-binding proteins, but binds only retinoic acid at specific sites within the nucleus, which may contribute to vitamin A-directed differentiation in epithelial tissue. [provided by RefSeq, Jul 2008] |
| <b>Molecular Mass</b>   | 40.81 kDa  |
| <b>AA Sequence</b>      | MPNFAGTWKMRSSNFDELLKALGVNAMLRKVAVAAASKPHVEIRQDGDQFYIKTS<br>TTVRTTEINFKVGEGFEEETVDGRKCRSLATWENENKIHCTQTLLEGDPKTYWTS<br>ELANNELILTFGADDVVCTRIYVRE  |
| <b>Applications</b>     | Enzyme-linked Immunoabsorbent Assay<br>Western Blot (Recombinant protein)<br>Antibody Production<br>Protein Array  |
| <b>Notes</b>            | Best use within three months from the date of receipt of this protein.   |

 Tel: 1-631-559-9269 1-516-512-3133

 Email: [info@creative-biomart.com](mailto:info@creative-biomart.com)  Fax: 1-631-938-8127

 45-1 Ramsey Road, Shirley, NY 11967, USA

**Storage** Store at -80 centigrade. Aliquot to avoid repeated freezing and thawing.

**Storage Buffer** 50 mM Tris-HCl, 10 mM reduced Glutathione, pH=8.0 in the elution buffer.

## GENE INFORMATION

**Gene Name** CRABP1 cellular retinoic acid binding protein 1 [ Homo sapiens ]

**Official Symbol** CRABP1

**Synonyms** CRABP1; cellular retinoic acid binding protein 1; cellular retinoic acid binding protein 1 , RBP5; cellular retinoic acid-binding protein 1; CRABP; CRABP I; CRABPI; cellular retinoic acid-binding protein I; RBP5; CRABP-I;

**Gene ID** 1381

**mRNA Refseq** NM\_004378

**Protein Refseq** NP\_004369

**MIM** 180230

**UniProt ID** P29762

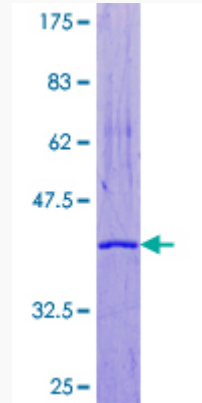
 Tel: 1-631-559-9269 1-516-512-3133

 Email: [info@creative-biomart.com](mailto:info@creative-biomart.com)  Fax: 1-631-938-8127

 45-1 Ramsey Road, Shirley, NY 11967, USA

**Quality Control**

**Testing:**



12.5% SDS-PAGE Stained with Coomassie Blue.

 Tel: 1-631-559-9269 1-516-512-3133

 Email: [info@creative-biomart.com](mailto:info@creative-biomart.com)  Fax: 1-631-938-8127

 45-1 Ramsey Road, Shirley, NY 11967, USA