

Recombinant Human CRADD Protein (Met1-Glu199)

Cat. No. CRADD-2259H Lot. No. (See product label)

SPECIFICATION

Product Overview	Recombinant human CRADD (Met1-Glu199) without tag was expressed in E. coli.
Species	Human
Source	E.coli
ProteinLength	Met1-Glu199
Form	Lyophilized powder/frozen liquid
Molecular Mass	21.89 kDa
Purity	>90% as determined by SDS-PAGE
Notes	For research use only.
Storage	Use a manual defrost freezer and avoid repeated freeze thaw cycles. Store at 2 to 8 centigrade for one week. Store at -20 to -80 centigrade for twelve months from the date of receipt.
Storage Buffer	Supplied as solution form in PBS or lyophilized from PBS.
Reconstitution	Reconstitute in sterile water for a stock solution.
Shipping	They are shipped out with dry ice/blue ice unless customers require otherwise.

 Tel: 1-631-559-9269 1-516-512-3133

 Email: info@creative-biomart.com  Fax: 1-631-938-8127

 45-1 Ramsey Road, Shirley, NY 11967, USA

GENE INFORMATION

Gene Name CRADD CASP2 and RIPK1 domain containing adaptor with death domain [Homo sapiens (human)]

Official Symbol CRADD

Synonyms CRADD; CASP2 and RIPK1 domain containing adaptor with death domain; death domain-containing protein CRADD; RAIDD; RIP associated ICH1/CED3 homologous protein with death domain; death adaptor molecule RAIDD; caspase and RIP adaptor with death domain; RIP-associated protein with a death domain; RIP-associated ICH1/CED3-homologous protein with death domain; MRT34; MGC9163;

Gene ID 8738

mRNA Refseq NM_003805

Protein Refseq NP_003796

MIM 603454

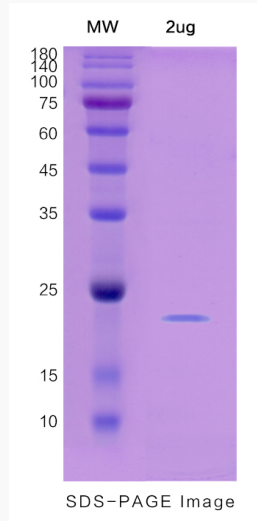
UniProt ID P78560

 Tel: 1-631-559-9269 1-516-512-3133

 Email: info@creative-biomart.com  Fax: 1-631-938-8127

 45-1 Ramsey Road, Shirley, NY 11967, USA

SDS-PAGE



 Tel: 1-631-559-9269 1-516-512-3133

 Email: info@creative-biomart.com  Fax: 1-631-938-8127

 45-1 Ramsey Road, Shirley, NY 11967, USA