

Recombinant Human CRAT Protein, GST-tagged

Cat. No. CRAT-1833H Lot. No. (See product label)

SPECIFICATION

Product Overview Human CRAT full-length ORF (NP_000746.2, 1 a.a. - 626 a.a.) recombinant protein with GST-tag at N-terminal.

Species Human

Source Wheat Germ

Description This gene encodes carnitine O-acetyltransferase, a member of the carnitine acyltransferase family and a key metabolic pathway enzyme which plays an important role in energy homeostasis and fat metabolism. This enzyme catalyzes the reversible transfer of acyl groups from an acyl-CoA thioester to carnitine and regulates the ratio of acyl-CoA/CoA. It is found in both the mitochondria and the peroxisome. Alternative splicing results in transcript variants encoding different isoforms that may localize to different subcellular compartments. [provided by RefSeq, Oct 2016]

Molecular Mass 97.3 kDa

AA Sequence

```
MLAFAARTVVKPLGFLKPFSLMKASSRFKAHQDALPRLPVPPLQQSLDHYLKALQPI
VSEEEWAHTKQLVDEFQASGGVGERLQKGLERRARKTENWLSEWWLKTAYLQYR
QPVVIYSSPGVMLPKQDFVDLQGQLRFAAKLIEGVLDKVMIDNETLPVEYLGKPL
CMNQYYQILSSCRVPGPKQDTVSNFSKTKKPPHITVVHNYQFFELDVYHSDGTPLT
ADQIFVQLEKIWNSSLQTNKEPVGILTSNHRNSWAKAYNTLIKDKVNRDSVRSIQKSI
FTVCLDATMPRVSEDEVYRSHVAGQMLHGGSRLNSG NRWFDKTLQFIVAEDGSCG
LVYEHA AAE GPPIVTLLDYVIEYTKKPELVRSPMVPLPMPKKLRFNITPEIKSDIEKAK
```

 Tel: 1-631-559-9269 1-516-512-3133

 Email: info@creative-biomart.com  Fax: 1-631-938-8127

 45-1 Ramsey Road, Shirley, NY 11967, USA

QNLSIMIQLDITVMVFHHFGKDFPKSEKLSPDAFIQMALQLAYYRIYGQACATYESA
 SLRMFHLGRDTIRSASMSDLTFVKAMDDSSVTEHQKVELLRKAVQAHRGYTDRAI
 RGEAFDRHLLGLKLQAIEDLVSMFDIFMDTSYAIAMHFHLSTSQVPAKTDCVMFFGP
 VVPDGYGVVCYNPMEAHINFSL SAYNSCAETNAARLAHYLEKALLDMRALLQSHPR
 KL

Applications
 Enzyme-linked Immunoabsorbent Assay
 Western Blot (Recombinant protein)
 Antibody Production
 Protein Array

Notes
 Best use within three months from the date of receipt of this protein.

Storage
 Store at -80 centigrade. Aliquot to avoid repeated freezing and thawing.

Storage Buffer
 50 mM Tris-HCl, 10 mM reduced Glutathione, pH=8.0 in the elution buffer.

GENE INFORMATION

Gene Name [CRAT carnitine O-acetyltransferase \[Homo sapiens \]](#)

Official Symbol [CRAT](#)

Synonyms CRAT; carnitine O-acetyltransferase; carnitine acetyltransferase; CAT1; CAT; carnitine acetylase;

Gene ID [1384](#)

mRNA Refseq [NM_000755](#)

Protein Refseq [NP_000746](#)

 Tel: 1-631-559-9269 1-516-512-3133

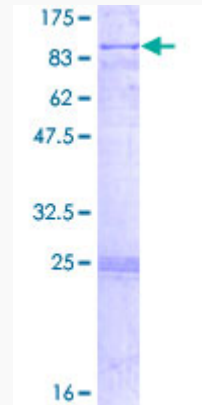
 Email: info@creative-biomart.com  Fax: 1-631-938-8127

 45-1 Ramsey Road, Shirley, NY 11967, USA

MIM 600184

UniProt ID P43155

**Quality Control
Testing:**



12.5% SDS-PAGE Stained with Coomassie Blue.

 Tel: 1-631-559-9269 1-516-512-3133

 Email: info@creative-biomart.com  Fax: 1-631-938-8127

 45-1 Ramsey Road, Shirley, NY 11967, USA