

Recombinant Human CRBN Protein, His-tagged

Cat. No. CRBN-09H Lot. No. (See product label)

SPECIFICATION

| | |
|-------------------------|---|
| Product Overview | Recombinant Human CRBN Protein, fused to His-tag, was expressed in E. coli. |
| Species | Human |
| Source | E.coli |
| Description | This gene encodes a protein related to the Lon protease protein family. In rodents and other mammals this gene product is found in the cytoplasm localized with a calcium channel membrane protein, and is thought to play a role in brain development. Mutations in this gene are associated with autosomal recessive nonsyndromic cognitive disability. Multiple transcript variants encoding different isoforms have been found for this gene. |
| Form | 50mM Tris, 0.3 M NaCl, pH 8.0. |
| Molecular Mass | 17.6 kDa |
| AA Sequence | MHHHHHHHHHHMNKCTSLCCKQCQETEITTKNEIFSLSLCGPMAAYVNPHGYVHET LTVYKACNLNLIGRPSTESHSWFPGYAWTVAQCKICASHIGWKFTATKKDMSPQKFW GLTRSALLPTIPDTEDEISPDKVILCLGLNDIFEAQKIEWHE |
| Purity | 90% |
| Storage | Store it under sterile conditions at -20 to -80 centigrade. It is recommended that the protein be aliquoted for optimal storage. Avoid repeated freeze-thaw cycles. |

 Tel: 1-631-559-9269 1-516-512-3133

 Email: info@creative-biomart.com  Fax: 1-631-938-8127

 45-1 Ramsey Road, Shirley, NY 11967, USA

Concentration 0.4 mg/mL

GENE INFORMATION

Gene Name CRBN cereblon [Homo sapiens (human)]

Official Symbol CRBN

Synonyms MRT2; MRT2A

Gene ID 51185

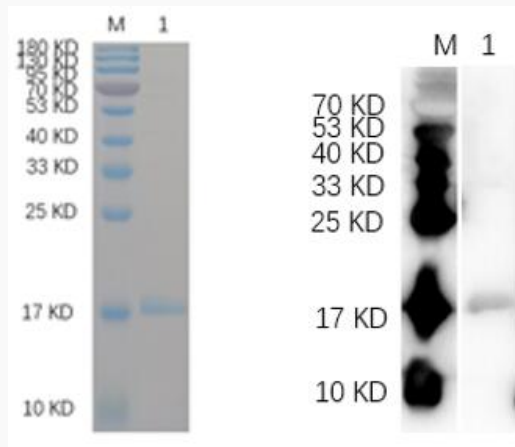
mRNA Refseq NM_016302

Protein Refseq NP_057386

MIM 609262

UniProt ID Q96SW2

SDS-PAGE



Tel: 1-631-559-9269 1-516-512-3133

Email: info@creative-biomart.com Fax: 1-631-938-8127

45-1 Ramsey Road, Shirley, NY 11967, USA



Reducing 12% SDS-PAGE and WB analysis profile of purified CRBN-BAP (CBB stained).

 Tel: 1-631-559-9269 1-516-512-3133

 Email: info@creative-biomart.com  Fax: 1-631-938-8127

 45-1 Ramsey Road, Shirley, NY 11967, USA