

# Recombinant Full Length Human CRBN Protein, N-Flag-tagged

**Cat. No.** CRBN-13HFL    **Lot. No.** (See product label)

## SPECIFICATION

<b>Product Overview</b>	Recombinant Full Length Human CRBN Protein, fused to Flag-tag at N-terminus, was expressed in HEK293T.
<b>Species</b>	Human
<b>Source</b>	HEK293
<b>ProteinLength</b>	2-422 aa(end)
<b>Description</b>	<p>The Cereblon (CRBN) protein via its interaction with the DNA damage-binding protein-1 (DDB1), Cullin 4 (Cul4A or Cul4B), and regulator of Cullins 1 (RoC1) forms a functional E3 Ub ligase complex. In this complex, Cereblon functions as a substrate receptor that mediates the ubiquitination and subsequent proteasomal degradation of target proteins. Like most E3 ligases, Cereblon complex ubiquitinates itself and its auto-ubiquitination promotes its ligase activity. Cereblon complex is involved in many biological processes including cell proliferation and apoptosis, and it has been extensively used in targeted protein degradation (PROTAC®), where CRBN binds to the protein of interest and leads to its degradation. This approach has shown promising results in the treatment of cancer.</p>
<b>Form</b>	Aqueous buffer solution. 40 mM Tris-HCl, pH 8.0, 110 mM NaCl, 2.2 mM KCl, 0.04% Tween-20, 20% glycerol, and 100 µg/ml FLAG peptide.
<b>Molecular Mass</b>	51 kDa

 Tel: 1-631-559-9269    1-516-512-3133

 Email: [info@creative-biomart.com](mailto:info@creative-biomart.com)     Fax: 1-631-938-8127

 45-1 Ramsey Road, Shirley, NY 11967, USA

<b>Purity</b>	≥70%
<b>Applications</b>	Useful for the study of enzyme kinetics, screening inhibitors, and selectivity profiling.
<b>Storage</b>	-80 centigrade
<b>Concentration</b>	0.31 mg/ml
<b>Use/Stability</b>	At least 6 months at -80 centigrade. Thaw on ice and gently mix prior to use. DO NOT VORTEX. Perform a quick spin before opening. Aliquot into small volumes and flash freeze for long term storage. Avoid multiple freeze/thaw cycles.

## GENE INFORMATION

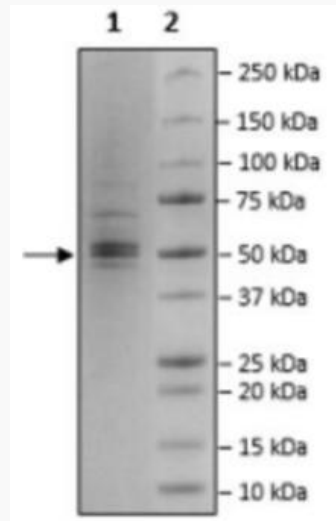
<b>Gene Name</b>	CRBN cereblon [ Homo sapiens (human) ]
<b>Official Symbol</b>	CRBN
<b>Synonyms</b>	CRBN; cereblon; AD-006; MRT2; MRT2A
<b>Gene ID</b>	51185
<b>mRNA Refseq</b>	NM_016302.4
<b>Protein Refseq</b>	NP_057386.2
<b>MIM</b>	609262
<b>UniProt ID</b>	Q96SW2

 Tel: 1-631-559-9269 1-516-512-3133

 Email: [info@creative-biomart.com](mailto:info@creative-biomart.com)  Fax: 1-631-938-8127

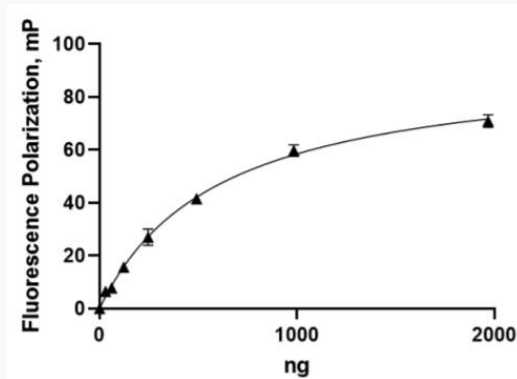
 45-1 Ramsey Road, Shirley, NY 11967, USA


**SDS-PAGE**




4-20% SDS-PAGE Coomassie Staining.

**CRBN-13HFL, 1**



 Tel: 1-631-559-9269 1-516-512-3133

 Email: [info@creative-biomart.com](mailto:info@creative-biomart.com)  Fax: 1-631-938-8127

 45-1 Ramsey Road, Shirley, NY 11967, USA