

Recombinant Human CRBN Protein, His-tagged

Cat. No. CRBN-16H Lot. No. (See product label)

SPECIFICATION

| | |
|-------------------------|---|
| Product Overview | Recombinant Human CRBN Protein(Lys300~Glu430)(1-427 aa), fused with N-terminal His tag, was expressed in E. coli. |
| Species | Human |
| Source | E.coli |
| ProteinLength | Lys300~Glu430 |
| Description | This gene encodes a protein related to the Lon protease protein family. In rodents and other mammals this gene product is found in the cytoplasm localized with a calcium channel membrane protein, and is thought to play a role in brain development. Mutations in this gene are associated with autosomal recessive nonsyndromic cognitive disability. Multiple transcript variants encoding different isoforms have been found for this gene. |
| Form | PBS, pH7.4, containing 0.01% SKL, 1mM DTT, 5% Trehalose and Proclin300. |
| Molecular Mass | 20/18kDa as determined by SDS-PAGE reducing conditions |
| Endotoxin | <1.0EU per 1g (determined by the LAL method) |
| Purity | > 90% |
| Applications | Positive Control; Immunogen; SDS-PAGE; WB. |

 Tel: 1-631-559-9269 1-516-512-3133

 Email: info@creative-biomart.com  Fax: 1-631-938-8127

 45-1 Ramsey Road, Shirley, NY 11967, USA



If bio-activity of the protein is needed, please check active protein.

Notes

The kit is designed for research use only, we will not be responsible for any issue if the kit was used in clinical diagnostic or any other procedures.

Storage

Avoid repeated freeze/thaw cycles.
Store at 2-8°C for one month.
Aliquot and store at -80°C for 12 months.

Concentration

200g/mL

Reconstitution

Reconstitute in 10mM PBS (pH7.4) to a concentration of 0.1-1.0 mg/mL. Do not vortex.

GENE INFORMATION

Gene Name

CRBN cereblon [Homo sapiens (human)]

Official Symbol

CRBN

Synonyms

MRT2; MRT2A

Gene ID

51185

mRNA Refseq

NM_001173482.1

Protein Refseq

NP_001166953.1

MIM

609262

UniProt ID

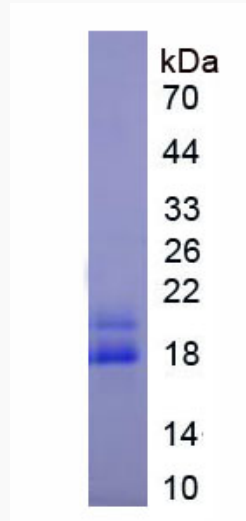
Q96SW2

Tel: 1-631-559-9269 1-516-512-3133

Email: info@creative-biomart.com Fax: 1-631-938-8127

45-1 Ramsey Road, Shirley, NY 11967, USA

SDS-PAGE of CRBN-16H



 Tel: 1-631-559-9269 1-516-512-3133

 Email: info@creative-biomart.com  Fax: 1-631-938-8127

 45-1 Ramsey Road, Shirley, NY 11967, USA