

# Recombinant Human CRBN Full Length Transmembrane protein, His-tagged

**Cat. No.** CRBN-2792H    **Lot. No.** (See product label)

## SPECIFICATION

<b>Product Overview</b>	Recombinant Human CRBN Full Length Transmembrane protein(Q96SW2)(1-442aa), fused with C-terminal 6xHis tag, was expressed in Insect cells.
<b>Species</b>	Human
<b>Source</b>	Insect cells
<b>ProteinLength</b>	1-442aa
<b>Form</b>	If the delivery form is liquid, the default storage buffer is Tris/PBS-based buffer, 5%-50% glycerol. If the delivery form is lyophilized powder, the buffer before lyophilization is Tris/PBS-based buffer, 6% Trehalose, pH 8.0.
<b>Molecular Mass</b>	53.4 kDa
<b>Purity</b>	Greater than 90% as determined by SDS-PAGE.
<b>Storage</b>	Store at -20°C/-80°C upon receipt, aliquoting is necessary for mutiple use. Avoid repeated freeze-thaw cycles.
<b>Reconstitution</b>	We recommend that this vial be briefly centrifuged prior to opening to bring the contents to the bottom. Please reconstitute protein in deionized sterile water to a concentration of 0.1-1.0 mg/mL. We recommend to add 5-50% of glycerol (final concentration) and aliquot for long-term storage at -20°C/-80°C.

 Tel: 1-631-559-9269    1-516-512-3133

 Email: [info@creative-biomart.com](mailto:info@creative-biomart.com)     Fax: 1-631-938-8127

 45-1 Ramsey Road, Shirley, NY 11967, USA

**AA Sequence**

MAGEGDQQDAAHNMGNHLPLPAESEEEDEMEVEDQDSKEAKKPNIIINFDTSLPTS  
 HTYLGADMEEFHGRTLHDDDDSCQVIPVLPQVMMILIPGQTLPLQLFHPQEVSVMVRNL  
 IQKDRTFAVLAYSINVQEREAQFGTTAEIYAYREEQDFGIEIVKVKAIGRQRFKVLELRT  
 QSDGIQQAQVQILPECVLPSTMSAVQLESLNKCQIFPSKPVSRDQCSYKWWQKYQ  
 KRKFHCANLTSWPRWLYSLYDAETLMDRIKKQLREWENLKDSDLSPNPIDFSYRV  
 AACLPIDDVLRIQLLKIGSAIQRRLRCELDIMNKCTSLCCKQCQETEITTKNEIFSLSLCG  
 PMAAYVNPBGYVHETLTVYKACNLNLIGRPSTEHSWFPGYAWTVAQCKICASHIGW  
 KFTATKKDMSPQKFWGLTRSALLPTIPDTEDEISPDKVLCL

**GENE INFORMATION**

**Gene Name** [CRBN cereblon \[ Homo sapiens \]](#)

**Official Symbol** [CRBN](#)

**Synonyms** CRBN; cereblon; mental retardation, non syndromic, autosomal recessive, 2A ,  
 MRT2A; protein cereblon; protein x 0001; MRT2; MRT2A; MGC27358;  
 DKFZp781K0715;

**Gene ID** [51185](#)

**mRNA Refseq** [NM\\_001173482](#)

**Protein Refseq** [NP\\_001166953](#)

**MIM** [609262](#)

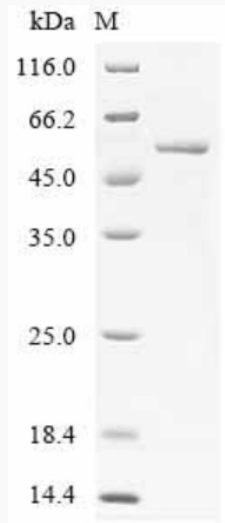
**UniProt ID** [Q96SW2](#)

 Tel: 1-631-559-9269 1-516-512-3133

 Email: [info@creative-biomart.com](mailto:info@creative-biomart.com)  Fax: 1-631-938-8127

 45-1 Ramsey Road, Shirley, NY 11967, USA

**SDS-PAGE**



 Tel: 1-631-559-9269 1-516-512-3133

 Email: [info@creative-biomart.com](mailto:info@creative-biomart.com)  Fax: 1-631-938-8127

 45-1 Ramsey Road, Shirley, NY 11967, USA