

# Recombinant Full Length Human CRBN Protein, C-Flag-tagged

Cat. No. CRBN-798HFL Lot. No. (See product label)

## SPECIFICATION

<b>Product Overview</b>	Recombinant Full Length Human CRBN Protein, fused to Flag-tag at C-terminus, was expressed in Mammalian cells.
<b>Species</b>	Human
<b>Source</b>	Mammalian Cells
<b>Description</b>	This gene encodes a protein related to the Lon protease protein family. In rodents and other mammals this gene product is found in the cytoplasm localized with a calcium channel membrane protein, and is thought to play a role in brain development. Mutations in this gene are associated with autosomal recessive nonsyndromic cognitive disability. Multiple transcript variants encoding different isoforms have been found for this gene.
<b>Form</b>	25 mM Tris HCl, pH 7.3, 100 mM glycine, 10% glycerol.
<b>Molecular Mass</b>	50.5 kDa
<b>AA Sequence</b>	MAGEGDQQDAAHNMGNHLPPLPAESEEEDEMEVEDQDSKEAKKPNIIINFDTSLPTS HTYLGADMEEFHGR TLHDDDSCQVIPVLPQVMMILIPGQTLPLQLFHPQEVSVMVRN LIQKDRTFAVLAYSINVQEREAQFGTTAE IYAYREEQDFGIEIVKVKAIQRQRFKVLEL RTQSDGIQQAKVQILPECVLPSTMSAVQLESLNKCQIFPS KPVSREDQCSYKWWQK YQKRKFHCANLTSWPRWLYSLYDAETLMDRIKKQLREW DENLKDDSLPSNPIDF SY RVAACLPIDDVLRIQLLKIGSAIQRLRCELDIMNKCTSLCCKQCQETEITTKNEIFSLSL CGPMAAYV NPHGYVHETLTVYKACNLNLIGRPSTESHWFPGYAWTVAQCKICASHI

 Tel: 1-631-559-9269 1-516-512-3133

 Email: [info@creative-biomart.com](mailto:info@creative-biomart.com)  Fax: 1-631-938-8127

 45-1 Ramsey Road, Shirley, NY 11967, USA

GWKFTATKKDMSPQKFWGLTRS  
ALLPTIPDTEDEISPDKVLCLTRTRPLEQKLISEEDLAANDILDYKDDDDKV

<b>Purity</b>	> 80% as determined by SDS-PAGE and Coomassie blue staining.
<b>Stability</b>	Stable for 12 months from the date of receipt of the product under proper storage and handling conditions. Avoid repeated freeze-thaw cycles.
<b>Storage</b>	Store at -80 centigrade.
<b>Concentration</b>	>50 ug/mL as determined by microplate BCA method.
<b>Preparation</b>	Recombinant protein was captured through anti-DDK affinity column followed by conventional chromatography steps.
<b>Protein Families</b>	Protease
<b>Full Length</b>	Full L.

## GENE INFORMATION

<b>Gene Name</b>	CRBN cereblon [ Homo sapiens (human) ]
<b>Official Symbol</b>	CRBN
<b>Synonyms</b>	MRT2; MRT2A
<b>Gene ID</b>	51185
<b>mRNA Refseq</b>	NM_016302.4

 Tel: 1-631-559-9269 1-516-512-3133

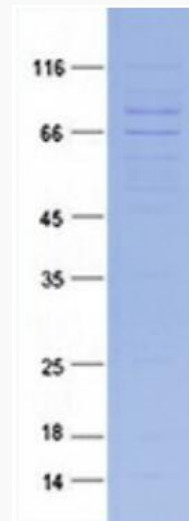
 Email: [info@creative-biomart.com](mailto:info@creative-biomart.com)  Fax: 1-631-938-8127

 45-1 Ramsey Road, Shirley, NY 11967, USA

**Protein Refseq** NP\_057386.2

**MIM** 609262

**UniProt ID** Q96SW2



Coomassie blue staining of purified CRBN protein.

 Tel: 1-631-559-9269 1-516-512-3133

 Email: [info@creative-biomart.com](mailto:info@creative-biomart.com)  Fax: 1-631-938-8127

 45-1 Ramsey Road, Shirley, NY 11967, USA