

Recombinant Full Length Human cereblon and DDB1 Complex Protein, His tagged

Cat. No. CRBN-DDB1-21HFL **Lot. No.** (See product label)

SPECIFICATION

Product Overview	Recombinant full-length human CRBN and DDB1 were expressed by baculovirus in Sf9 insect cells using N-terminal His-tag for both proteins. The CRBN and DDB1 gene accession numbers are NM_016302 and NM_001923, respectively.
Species	Human
Source	Insect cells
ProteinLength	CRBN: 1-442aa DDB1: 1-1140aa
Description	CRBN (Cereblon) and DDB1 (DNA damage-binding protein 1) are proteins that play crucial roles in various cellular processes, including DNA repair, cell cycle regulation, and protein degradation. CRBN is a substrate receptor protein, while DDB1 acts as an adaptor protein within the Cullin-RING ubiquitin ligase (CRL) E3 ligase complex. This complex plays a critical role in the ubiquitin proteasome pathway, which controls the targeted degradation of specific proteins. Understanding the intricate roles of CRBN and DDB1 in cellular processes is crucial for deciphering their potential as therapeutic targets and advancing our knowledge of various diseases, particularly cancer, where dysregulation of these proteins has been observed.
Tag	N-His
Molecular Mass	CRBN: ~51 kDa

 Tel: 1-631-559-9269 1-516-512-3133

 Email: info@creative-biomart.com  Fax: 1-631-938-8127

 45-1 Ramsey Road, Shirley, NY 11967, USA

	DDB1: ~131 kDa
Purity	> 80%
Stability	1yr at -70 centigrade from date of shipment.
Storage	Store product at -70 centigrade. For optimal storage, aliquot target into smaller quantities after centrifugation and store at recommended temperature. For most favorable performance, avoid repeated handling and multiple freeze/thaw cycles.
Storage Buffer	Recombinant protein stored in 50mM sodium phosphate, pH 7.0, 300mM NaCl, 150mM imidazole, 0.25mM DTT, 25% glycerol.
Concentration	> 0.05 µg/µL
Shipping	Dry ice
GeneID 2	1642

GENE INFORMATION

Gene Name	CRBN cereblon [Homo sapiens (human)]
Official Symbol	CRBN
Synonyms	CRBN; cereblon; mental retardation, non syndromic, autosomal recessive, 2A , MRT2A; protein cereblon; protein x 0001; MRT2; MRT2A; MGC27358; DKFZp781K0715;
Gene ID	51185

 Tel: 1-631-559-9269 1-516-512-3133

 Email: info@creative-biomart.com  Fax: 1-631-938-8127

 45-1 Ramsey Road, Shirley, NY 11967, USA

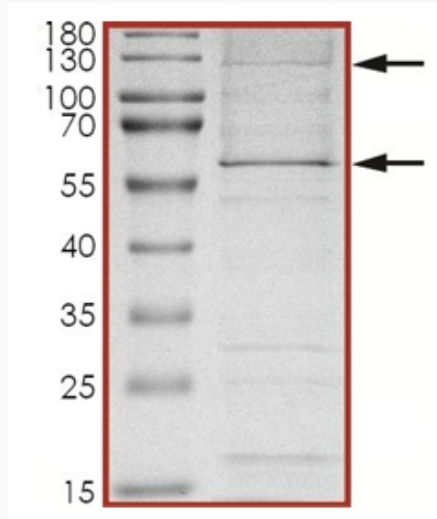
mRNA Refseq	NM_016302
Protein Refseq	NP_057386
MIM	609262
UniProt ID	Q96SW2
Gene Name 2	DDB1 damage-specific DNA binding protein 1, 127kDa [Homo sapiens (human)]
Official Symbol 2	DDB1
Synonyms 2	DDB1; damage-specific DNA binding protein 1, 127kDa; damage specific DNA binding protein 1 (127kD); DNA damage-binding protein 1; XPE; XAP-1; UV-DDB 1; DDB p127 subunit; XPE-binding factor; HBV X-associated protein 1; DNA damage-binding protein a; UV-damaged DNA-binding factor; UV-damaged DNA-binding protein 1; damage-specific DNA-binding protein 1; xeroderma pigmentosum group E-complementing protein; DDBA; XAP1; XPCE; XPE-BF; UV-DDB1;
mRNA Refseq 2	NM_001923
Protein Refseq 2	NP_001914
MIM 2	600045
UniProt ID 2	Q16531

 Tel: 1-631-559-9269 1-516-512-3133

 Email: info@creative-biomart.com  Fax: 1-631-938-8127

 45-1 Ramsey Road, Shirley, NY 11967, USA

The purity of CRBN/DDB1 was determined to be > 80% by densitometry.



CRBN observed MW ~58 kDa.
CRBN calculated MW ~51 kDa.
DDB1 observed MW ~128 kDa.
DDB1 calculated MW ~131 kDa.

 Tel: 1-631-559-9269 1-516-512-3133

 Email: info@creative-biomart.com  Fax: 1-631-938-8127

 45-1 Ramsey Road, Shirley, NY 11967, USA