

# Recombinant Human CRCP Protein, Myc/DDK-tagged, C13 and N15-labeled

**Cat. No.** CRCP-4225H    **Lot. No.** (See product label)

## SPECIFICATION

<b>Product Overview</b>	CRCP MS Standard C13 and N15-labeled recombinant protein (NP_055293) with a C-terminal MYC/DDK tag, was expressed in HEK293 cells.
<b>Species</b>	Human
<b>Source</b>	HEK293
<b>Description</b>	This gene encodes a membrane protein that functions as part of a receptor complex for a small neuropeptide that increases intracellular cAMP levels. Alternate transcriptional splice variants, encoding different isoforms, have been characterized.
<b>Molecular Mass</b>	16.7 kDa
<b>AA Sequence</b>	MEVKDANSALLSNYEVFQLLDLKEQRKESGKNKHSSGQQNLNTITYETLKYISKTP CRHQSP EIVREFLTALKSHKLTAEKQLLNHRPVTAVEIQLMVEESEERLTEEQIEAL LHTVTSILPAEPEAEQKKNTNSNVAMDEEDPATRTRPLEQKLISEEDLAANDILDYKD DDDKV
<b>Purity</b>	> 80% as determined by SDS-PAGE and Coomassie blue staining
<b>Stability</b>	Stable for 3 months from receipt of products under proper storage and handling conditions.
<b>Storage</b>	Store at -80 centigrade. Avoid repeated freeze-thaw cycles.

 Tel: 1-631-559-9269    1-516-512-3133

 Email: [info@creative-biomart.com](mailto:info@creative-biomart.com)     Fax: 1-631-938-8127

 45-1 Ramsey Road, Shirley, NY 11967, USA

**Concentration** 50 µg/mL as determined by BCA

**Storage Buffer** 100 mM glycine, 25 mM Tris-HCl, pH 7.3.

## GENE INFORMATION

**Gene Name** [CRCP CGRP receptor component \[ Homo sapiens \(human\) \]](#)

**Official Symbol** [CRCP](#)

**Synonyms** CRCP; CGRP receptor component; DNA-directed RNA polymerase III subunit RPC9; calcitonin gene related peptide receptor component protein; CGRP RCP; RCP; RCP9; RNA polymerase III subunit C9; CGRP-receptor component protein; calcitonin gene-related peptide-receptor component protein; CGRPRCP; CGRP-RCP; MGC111194;

**Gene ID** [27297](#)

**mRNA Refseq** [NM\\_014478](#)

**Protein Refseq** [NP\\_055293](#)

**MIM** [606121](#)

**UniProt ID** [O75575](#)

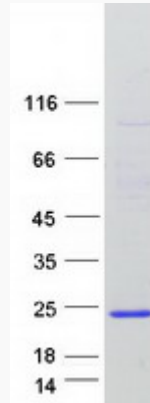
 Tel: 1-631-559-9269 1-516-512-3133

 Email: [info@creative-biomart.com](mailto:info@creative-biomart.com)  Fax: 1-631-938-8127

 45-1 Ramsey Road, Shirley, NY 11967, USA



SDS-PAGE



Tel: 1-631-559-9269 1-516-512-3133

Email: [info@creative-biomart.com](mailto:info@creative-biomart.com) Fax: 1-631-938-8127

45-1 Ramsey Road, Shirley, NY 11967, USA