

Recombinant Human CREB1 Protein (Lys122-Asp327), N-His tagged

Cat. No. CREB1-1804H Lot. No. (See product label)

SPECIFICATION

Product Overview	Recombinant human CREB1 (Lys122-Asp327) fused with N-His tag was expressed in E. coli.
Species	Human
Source	E.coli
ProteinLength	Lys122-Asp327
Form	Lyophilized powder/frozen liquid
Molecular Mass	24.56 kDa
Purity	>90% as determined by SDS-PAGE
Notes	For research use only.
Storage	Use a manual defrost freezer and avoid repeated freeze thaw cycles. Store at 2 to 8 centigrade for one week. Store at -20 to -80 centigrade for twelve months from the date of receipt.
Storage Buffer	0.01M PBS, pH 7.4, 0.02% NLS
Reconstitution	Reconstitute in sterile water for a stock solution.

 Tel: 1-631-559-9269 1-516-512-3133

 Email: info@creative-biomart.com  Fax: 1-631-938-8127

 45-1 Ramsey Road, Shirley, NY 11967, USA

Shipping They are shipped out with dry ice/blue ice unless customers require otherwise.

GENE INFORMATION

Gene Name CREB1 cAMP responsive element binding protein 1 [Homo sapiens (human)]

Official Symbol CREB1

Synonyms CREB1; cAMP responsive element binding protein 1; cyclic AMP-responsive element-binding protein 1; CREB-1; transactivator protein; active transcription factor CREB; cAMP-response element-binding protein-1; cAMP-responsive element-binding protein 1; CREB; MGC9284;

Gene ID 1385

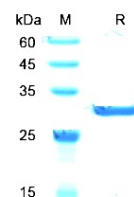
mRNA Refseq NM_004379

Protein Refseq NP_004370

MIM 123810

UniProt ID P16220

SDS-PAGE



 Tel: 1-631-559-9269 1-516-512-3133

 Email: info@creative-biomart.com  Fax: 1-631-938-8127

 45-1 Ramsey Road, Shirley, NY 11967, USA