

## Recombinant Human CREB1 Protein, GST-tagged

Cat. No. CREB1-1839H Lot. No. (See product label)

### SPECIFICATION

<b>Product Overview</b>	Human CREB1 full-length ORF ( AAH10636, 1 a.a. - 341 a.a.) recombinant protein with GST-tag at N-terminal.
<b>Species</b>	Human
<b>Source</b>	Wheat Germ
<b>Description</b>	This gene encodes a transcription factor that is a member of the leucine zipper family of DNA binding proteins. This protein binds as a homodimer to the cAMP-responsive element, an octameric palindrome. The protein is phosphorylated by several protein kinases, and induces transcription of genes in response to hormonal stimulation of the cAMP pathway. Alternate splicing of this gene results in several transcript variants encoding different isoforms. [provided by RefSeq, Mar 2016]
<b>Molecular Mass</b>	63.25 kDa
<b>AA Sequence</b>	MTMESGAENQQSGDAAVTEAENQQMTVQAQPQIATLAQVSMPPAAHATSSAPT VTL VQLPNGQTVQVHGVIQAAQPSVIQSPQVQTVQSSCKDLKRLFSGTQISTIAESED SQ ESVDSVTDSQKRREILSRRPSYRKILNDLSSDAPGVPRIEEEKSEEETSAPAITTVTP TPIYQTSSGQYIAITQGGAIQLANNGTDGVQGLQTLTMTNAAATQPGTTILQYAQTTD GQQILVPSNHVVVQAASGDVQTYQIRTAPTSTIAPGVVMASSPALPTQPAEEAARKR EVRLMKNREAARECRKKKEYVKLENRVAVLENQNKT LIEELKALKDLYCHKSD
<b>Applications</b>	Enzyme-linked Immunoabsorbent Assay Western Blot (Recombinant protein)

 Tel: 1-631-559-9269 1-516-512-3133

 Email: [info@creative-biomart.com](mailto:info@creative-biomart.com)  Fax: 1-631-938-8127

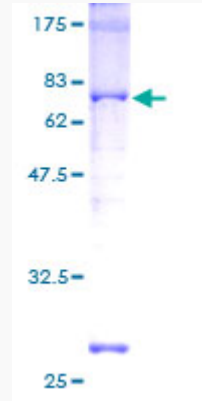
 45-1 Ramsey Road, Shirley, NY 11967, USA

	Antibody Production Protein Array
<b>Notes</b>	Best use within three months from the date of receipt of this protein.
<b>Storage</b>	Store at -80 centigrade. Aliquot to avoid repeated freezing and thawing.
<b>Storage Buffer</b>	50 mM Tris-HCl, 10 mM reduced Glutathione, pH=8.0 in the elution buffer.
<b>GENE INFORMATION</b>	
<b>Gene Name</b>	CREB1 cAMP responsive element binding protein 1 [ Homo sapiens ]
<b>Official Symbol</b>	CREB1
<b>Synonyms</b>	CREB1; cAMP responsive element binding protein 1; cyclic AMP-responsive element-binding protein 1; CREB-1; transactivator protein; active transcription factor CREB; cAMP-response element-binding protein-1; cAMP-responsive element-binding protein 1; CREB; MGC9284;
<b>Gene ID</b>	1385
<b>mRNA Refseq</b>	NM_004379
<b>Protein Refseq</b>	NP_004370
<b>MIM</b>	123810
<b>UniProt ID</b>	P16220

 Tel: 1-631-559-9269 1-516-512-3133

 Email: [info@creative-biomart.com](mailto:info@creative-biomart.com)  Fax: 1-631-938-8127

 45-1 Ramsey Road, Shirley, NY 11967, USA



**Quality Control**

**Testing:**

12.5% SDS-PAGE Stained with Coomassie Blue.

 Tel: 1-631-559-9269 1-516-512-3133

 Email: [info@creative-biomart.com](mailto:info@creative-biomart.com)  Fax: 1-631-938-8127

 45-1 Ramsey Road, Shirley, NY 11967, USA