

Recombinant Human CREB1, His-tagged

Cat. No. CREB1-183H Lot. No. (See product label)

SPECIFICATION

Product Overview Recombinant Human CREB1 protein(NP_001307722.1)(Ile102~Asp341), fused to N-terminal His tag, was expressed in E. coli.

Species Human

Source E.coli

ProteinLength Ile102~Asp341

Form 20mM Tris, 150mM NaCl, pH8.0, containing 1mM EDTA, 1mM DTT, 0.01% SKL, 5% Trehalose and Proclin300.

Molecular Mass 36kDa as determined by SDS-PAGE reducing conditions.

Endotoxin <1.0EU per 1g (determined by the LAL method)

Purity > 97%

Applications Positive Control; Immunogen; SDS-PAGE; WB.

Stability The thermal stability is described by the loss rate. The loss rate was determined by accelerated thermal degradation test, that is, incubate the protein at 37°C for 48h, and no obvious degradation and precipitation were observed. The loss rate is less than 5% within the expiration date under appropriate storage condition.

 Tel: 1-631-559-9269 1-516-512-3133

 Email: info@creative-biomart.com  Fax: 1-631-938-8127

 45-1 Ramsey Road, Shirley, NY 11967, USA

Storage Avoid repeated freeze/thaw cycles. Store at 2-8°C for one month. Aliquot and store at -80°C for 12 months.

Reconstitution Reconstitute in 20mM Tris, 150mM NaCl (pH8.0) to a concentration of 0.1-1.0 mg/mL. Do not vortex.

GENE INFORMATION

Gene Name CREB1 cAMP responsive element binding protein 1 [Homo sapiens (human)]

Official Symbol CREB1

Synonyms CREB; CREB-1

Gene ID 1385

mRNA Refseq NM_001320793.2

Protein Refseq NP_001307722.1

MIM 123810

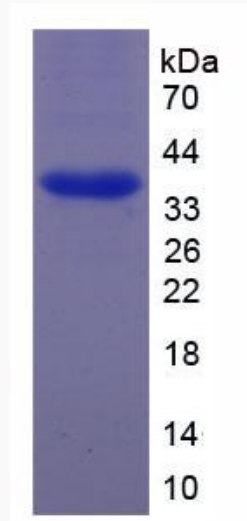
UniProt ID P16220

 Tel: 1-631-559-9269 1-516-512-3133

 Email: info@creative-biomart.com  Fax: 1-631-938-8127

 45-1 Ramsey Road, Shirley, NY 11967, USA

SDS-PAGE



 Tel: 1-631-559-9269 1-516-512-3133

 Email: info@creative-biomart.com  Fax: 1-631-938-8127

 45-1 Ramsey Road, Shirley, NY 11967, USA