

# Recombinant Full Length Human CREB1 Protein, N-His-tagged

Cat. No. CREB1-468HFL Lot. No. (See product label)

## SPECIFICATION

<b>Product Overview</b>	Recombinant Full Length Human CREB1 Protein, fused to His-tag at N-terminus, was expressed in E. coli.
<b>Species</b>	Human
<b>Source</b>	E.coli
<b>Description</b>	This gene encodes a transcription factor that is a member of the leucine zipper family of DNA binding proteins. This protein binds as a homodimer to the cAMP-responsive element, an octameric palindrome. The protein is phosphorylated by several protein kinases, and induces transcription of genes in response to hormonal stimulation of the cAMP pathway. Alternate splicing of this gene results in several transcript variants encoding different isoforms.
<b>Form</b>	25mM Tris, pH8.0, 150 mM NaCl, 10% glycerol, 1 % Sarkosyl.
<b>Molecular Mass</b>	35 kDa
<b>AA Sequence</b>	A DNA sequence encoding human full-length CREB1.
<b>Purity</b>	> 80% as determined by SDS-PAGE and Coomassie blue staining.
<b>Stability</b>	Stable for 12 months from the date of receipt of the product under proper storage and handling conditions. Avoid repeated freeze-thaw cycles.

 Tel: 1-631-559-9269 1-516-512-3133

 Email: [info@creative-biomart.com](mailto:info@creative-biomart.com)  Fax: 1-631-938-8127

 45-1 Ramsey Road, Shirley, NY 11967, USA

<b>Storage</b>	Store at -80 centigrade.
<b>Concentration</b>	>50 ug/mL as determined by microplate BCA method.
<b>Preparation</b>	Recombinant protein was captured through anti-DDK affinity column followed by conventional chromatography steps.
<b>Protein Families</b>	Druggable Genome, Transcription Factors
<b>Protein Pathways</b>	Antigen processing and presentation, Huntington's disease, Melanogenesis, Prostate cancer
<b>Full Length</b>	Full L.

## GENE INFORMATION

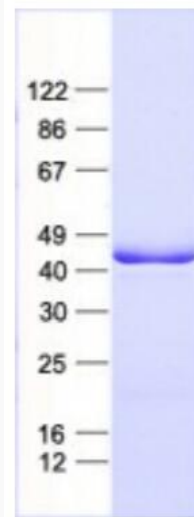
<b>Gene Name</b>	CREB1 cAMP responsive element binding protein 1 [ Homo sapiens (human) ]
<b>Official Symbol</b>	CREB1
<b>Synonyms</b>	CREB; CREB-1
<b>Gene ID</b>	1385
<b>mRNA Refseq</b>	NM_004379.5
<b>Protein Refseq</b>	NP_004370.1
<b>MIM</b>	123810
<b>UniProt ID</b>	P16220

 Tel: 1-631-559-9269 1-516-512-3133

 Email: [info@creative-biomart.com](mailto:info@creative-biomart.com)  Fax: 1-631-938-8127

 45-1 Ramsey Road, Shirley, NY 11967, USA

SDS-PAGE



 Tel: 1-631-559-9269 1-516-512-3133

 Email: [info@creative-biomart.com](mailto:info@creative-biomart.com)  Fax: 1-631-938-8127

 45-1 Ramsey Road, Shirley, NY 11967, USA