

Recombinant Human CREB1 protein, His-tagged

Cat. No. CREB1-7843H Lot. No. (See product label)

SPECIFICATION

Product Overview	Recombinant Human CREB1 protein(1-123 aa), fused with N-terminal His tag, was expressed in E. coli.
Species	Human
Source	E.coli
ProteinLength	1-123 aa
Form	The purified protein was Lyophilized from sterile PBS (58mM Na ₂ HPO ₄ , 17mM NaH ₂ PO ₄ , 68mM NaCl, pH7.4). 5 % trehalose and 5 % mannitol are added as protectant before lyophilization. The elution buffer contain 300mM imidazole.
Storage	Short-term storage: Store at 2-8°C for (1-2 weeks). Long-term storage: Aliquot and store at -20°C to -80°C for up to 3 months, reconstitution with sterile water and addition of an equal volume of glycerol. Avoid repeat freeze-thaw cycles.
Purity	85%, by SDS-PAGE with Coomassie Brilliant Blue staining.

GENE INFORMATION

Official Symbol	CREB1
Synonyms	CREB1; cAMP responsive element binding protein 1; cyclic AMP-responsive element-binding protein 1; CREB-1; transactivator protein; active transcription factor CREB;

 Tel: 1-631-559-9269 1-516-512-3133

 Email: info@creative-biomart.com  Fax: 1-631-938-8127

 45-1 Ramsey Road, Shirley, NY 11967, USA

cAMP-response element-binding protein-1; cAMP-responsive element-binding protein 1; CREB; MGC9284;

Gene ID 1385

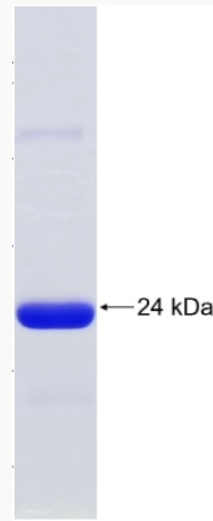
mRNA Refseq NM_004379

Protein Refseq NP_004370

MIM 123810

UniProt ID P16220

SDS-PAGE



 Tel: 1-631-559-9269 1-516-512-3133

 Email: info@creative-biomart.com  Fax: 1-631-938-8127

 45-1 Ramsey Road, Shirley, NY 11967, USA