

Recombinant Human CREB3L1 Protein, GST-tagged

Cat. No. CREB3L1-1844H Lot. No. (See product label)

SPECIFICATION

Product Overview	Human CREB3L1 full-length ORF (NP_443086.1, 1 a.a. - 519 a.a.) recombinant protein with GST-tag at N-terminal.
Species	Human
Source	Wheat Germ
Description	The protein encoded by this gene is normally found in the membrane of the endoplasmic reticulum (ER). However, upon stress to the ER, the encoded protein is cleaved and the released cytoplasmic transcription factor domain translocates to the nucleus. There it activates the transcription of target genes by binding to box-B elements. [provided by RefSeq, Jun 2013]
Molecular Mass	83.4 kDa
AA Sequence	MDAVLEPFPADRLFPGSSFLDLGDLNESDFLNNAHFPEHLDHFTENMEDFSNDLFS SFFDDPVLDKESPLLDMELDSPTPGIQAHSYSLSGDSAPQSPLVPIKMEDTTQDAE HGAWALGHKLCSIMVKQEQSPELPVDPLAAPSAMAAAAAMATTPLLGLSPLSRLPIP HQAPGEMTQLPVIKAEPLEVNQFLKVTPEDLVQMPPTPPSSHGSDSDGGSQSPRSLP PSSPVRPMARSSTAISTSPLLTAPHKLQGTSGPLLLTEEEKRTLIAEGYPIPTKLPLTK AEEKALKRVRKIKNKISAQESRRKKKEYVECLEKKVETFTSENNELWKKVETLENA NRTLLQQLQKLQTLVTNKISRKYKMAATQTGTCLMVAALCFVLVLGSLVPCLPPEFSS GSQTVKEDPLAADGVYASQMPSRSLLFYDDGAGLWEDGRSTLLPMEPPDGWEIN PGGPAEQRPRDHLQHDHLDSTHETTKYLSEAWPKDGGNGTSPDFSHSKEWFHDR

 Tel: 1-631-559-9269 1-516-512-3133

 Email: info@creative-biomart.com  Fax: 1-631-938-8127

 45-1 Ramsey Road, Shirley, NY 11967, USA

	DLGPNTTIKLS
Applications	Enzyme-linked Immunoabsorbent Assay Western Blot (Recombinant protein) Antibody Production Protein Array
Notes	Best use within three months from the date of receipt of this protein.
Storage	Store at -80 centigrade. Aliquot to avoid repeated freezing and thawing.
Storage Buffer	50 mM Tris-HCl, 10 mM reduced Glutathione, pH=8.0 in the elution buffer.
GENE INFORMATION	
Gene Name	CREB3L1 cAMP responsive element binding protein 3-like 1 [Homo sapiens]
Official Symbol	CREB3L1
Synonyms	CREB3L1; cAMP responsive element binding protein 3-like 1; cyclic AMP-responsive element-binding protein 3-like protein 1; BBF 2 homolog (drosophila); OASIS; BBF-2 homolog; old astrocyte specifically induced substance; old astrocyte specifically-induced substance; cAMP-responsive element-binding protein 3-like protein 1;
Gene ID	90993
mRNA Refseq	NM_052854
Protein Refseq	NP_443086
MIM	616215

 Tel: 1-631-559-9269 1-516-512-3133

 Email: info@creative-biomart.com  Fax: 1-631-938-8127

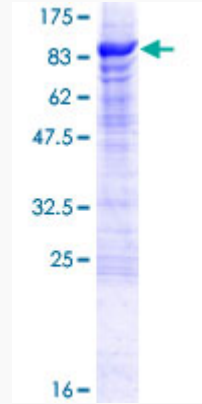
 45-1 Ramsey Road, Shirley, NY 11967, USA

UniProt ID

Q96BA8

Quality Control

Testing:



12.5% SDS-PAGE Stained with Coomassie Blue.

 Tel: 1-631-559-9269 1-516-512-3133

 Email: info@creative-biomart.com  Fax: 1-631-938-8127

 45-1 Ramsey Road, Shirley, NY 11967, USA