

## Recombinant Human CREB3L2 Protein, GST-tagged

**Cat. No.** CREB3L2-1845H    **Lot. No.** (See product label)

### SPECIFICATION

<b>Product Overview</b>	Human CREB3L2 full-length ORF ( AAH63666.1, 1 a.a. - 247 a.a.) recombinant protein with GST-tag at N-terminal.
<b>Species</b>	Human
<b>Source</b>	Wheat Germ
<b>Description</b>	This gene encodes a member of the oasis bZIP transcription factor family. Members of this family can dimerize but form homodimers only. The encoded protein is a transcriptional activator. Translocations between this gene on chromosome 7 and the gene fused in sarcoma on chromosome 16 can be found in some tumors. Multiple transcript variants encoding different isoforms have been found for this gene. [provided by RefSeq, Dec 2011]
<b>Molecular Mass</b>	54 kDa
<b>AA Sequence</b>	MEVLESGEQGVLQWDRKLSLSEPGDGEALMYHTHFSELLDEFSQNVLGQLLNDP FLSEKSVSMVEVPSPTSPAPLIQAEHSYSLCEEPRASPFTHITSDSFNDDEVESEK WYLSTDFPSTSIKTEPVTDEPPPGLVPSVTLTITAISTPLEKEEPLEMNTGVDSSCQ TIIPKIKLEPHEVDQFLNFSPKEGLSALPVSLWVMDMVSGSTEREYGERAGMSLYHR CCSWLYEIALFLKNKNFASK
<b>Applications</b>	Enzyme-linked Immunoabsorbent Assay Western Blot (Recombinant protein) Antibody Production

 Tel: 1-631-559-9269    1-516-512-3133

 Email: [info@creative-biomart.com](mailto:info@creative-biomart.com)     Fax: 1-631-938-8127

 45-1 Ramsey Road, Shirley, NY 11967, USA

**Protein Array**

<b>Notes</b>	Best use within three months from the date of receipt of this protein.
<b>Storage</b>	Store at -80 centigrade. Aliquot to avoid repeated freezing and thawing.
<b>Storage Buffer</b>	50 mM Tris-HCl, 10 mM reduced Glutathione, pH=8.0 in the elution buffer.

**GENE INFORMATION**

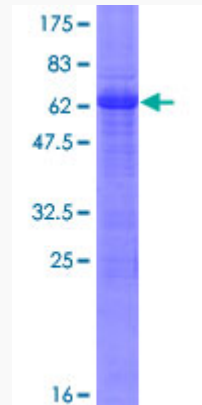
<b>Gene Name</b>	CREB3L2 cAMP responsive element binding protein 3-like 2 [ Homo sapiens ]
<b>Official Symbol</b>	CREB3L2
<b>Synonyms</b>	CREB3L2; cAMP responsive element binding protein 3-like 2; cyclic AMP-responsive element-binding protein 3-like protein 2; BBF2H7; TCAG_1951439; FUS/BBF2H7 protein; B-ZIB transcription factor; basic transcription factor 2; BBF2 human homolog on chromosome 7; cAMP-responsive element-binding protein 3-like protein 2; MGC71006; MGC131709;
<b>Gene ID</b>	64764
<b>mRNA Refseq</b>	NM_001253775
<b>Protein Refseq</b>	NP_001240704
<b>MIM</b>	608834
<b>UniProt ID</b>	Q70SY1

 Tel: 1-631-559-9269 1-516-512-3133

 Email: [info@creative-biomart.com](mailto:info@creative-biomart.com)  Fax: 1-631-938-8127

 45-1 Ramsey Road, Shirley, NY 11967, USA

Quality Control  
Testing:



12.5% SDS-PAGE Stained with Coomassie Blue.

 Tel: 1-631-559-9269 1-516-512-3133

 Email: [info@creative-biomart.com](mailto:info@creative-biomart.com)  Fax: 1-631-938-8127

 45-1 Ramsey Road, Shirley, NY 11967, USA