

Recombinant Human CREB3L4 Protein, GST-tagged

Cat. No. CREB3L4-1847H Lot. No. (See product label)

SPECIFICATION

Product Overview	Human CREB3L4 full-length ORF (NP_570968.1, 1 a.a. - 395 a.a.) recombinant protein with GST-tag at N-terminal.
Species	Human
Source	Wheat Germ
Description	This gene encodes a CREB (cAMP responsive element binding) protein with a transmembrane domain which localizes it to the ER membrane. The encoded protein is a transcriptional activator which contains a dimerization domain, and this protein may function in a number of processing pathways including protein processing. Multiple transcript variants encoding different isoforms have been found for this gene. [provided by RefSeq, Dec 2011]
Molecular Mass	69.8 kDa
AA Sequence	MDLGIPDLLDAWLEPPEDIFSTGSVLELGLHCPPPEVPVTRLQEQLQGWKSGGDR GCGLQESEPEDFLKLFIDPNEVYCSEASPGSDSGISEDPCHPDSPPAPRATSSPMLY EVVYEAGALERMQGETGPNVGLISIQLDQWSPAFMVPDSCMVSELPFDAHAILPR AGTVAPVPCTLLPCQTLFLTDEEKRLLGQEGVSLPSHLPLTKAEERVLKKVRRKIRN KQSAQDSRRRKKEYIDGLESRVAACSAQNQELQKKVQELERHNISLVAQLRQLQTLI AQTSNKAQTSTCVLILLFSLALIILPSFSPFQSRPEAGSEDYQPHGVTSRNILTHKDV TENLETQVVESRLREPPGAKDANGSTRTLLEKMGGKPRPSGRIRSVLHADEM
Applications	Enzyme-linked Immunoabsorbent Assay

 Tel: 1-631-559-9269 1-516-512-3133

 Email: info@creative-biomart.com  Fax: 1-631-938-8127

 45-1 Ramsey Road, Shirley, NY 11967, USA

Western Blot (Recombinant protein)
Antibody Production
Protein Array

Notes Best use within three months from the date of receipt of this protein.

Storage Store at -80 centigrade. Aliquot to avoid repeated freezing and thawing.

Storage Buffer 50 mM Tris-HCl, 10 mM reduced Glutathione, pH=8.0 in the elution buffer.

GENE INFORMATION

Gene Name CREB3L4 cAMP responsive element binding protein 3-like 4 [Homo sapiens]

Official Symbol CREB3L4

Synonyms

CREB3L4; cAMP responsive element binding protein 3-like 4; cyclic AMP-responsive element-binding protein 3-like protein 4; AlbZIP; ATCE1; CREB3; CREB4; hJAL; CREB-4; tisp40; attaching to CRE-like 1; cAMP responsive element binding protein 1; cAMP-responsive element-binding protein 4; androgen-induced basic leucine zipper protein; cyclic AMP-responsive element-binding protein 4; transcript induced in spermiogenesis protein 40; cAMP-responsive element-binding protein 3-like protein 4; JAL; AIBZIP;

Gene ID 148327

mRNA Refseq NM_001255978

Protein Refseq NP_001242907

MIM 607138

 Tel: 1-631-559-9269 1-516-512-3133

 Email: info@creative-biomart.com  Fax: 1-631-938-8127

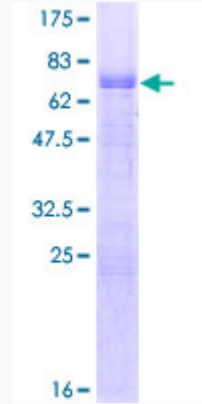
 45-1 Ramsey Road, Shirley, NY 11967, USA

UniProt ID

Q8TEY5

Quality Control

Testing:



12.5% SDS-PAGE Stained with Coomassie Blue.

 Tel: 1-631-559-9269 1-516-512-3133

 Email: info@creative-biomart.com  Fax: 1-631-938-8127

 45-1 Ramsey Road, Shirley, NY 11967, USA