

Recombinant Human CREB5 Protein, GST-tagged

Cat. No. CREB5-1850H Lot. No. (See product label)

SPECIFICATION

Product Overview	Human CREB5 full-length ORF (NP_878901.2, 1 a.a. - 508 a.a.) recombinant protein with GST-tag at N-terminal.
Species	Human
Source	Wheat Germ
Description	The product of this gene belongs to the CRE (cAMP response element)-binding protein family. Members of this family contain zinc-finger and bZIP DNA-binding domains. The encoded protein specifically binds to CRE as a homodimer or a heterodimer with c-Jun or CRE-BP1, and functions as a CRE-dependent trans-activator. Alternatively spliced transcript variants encoding different isoforms have been identified. [provided by RefSeq, Jul 2008]
Molecular Mass	83.3 kDa
AA Sequence	MIYEESKMNLEQERPFVCSAPGCSQRFPTEHDLMIHHRHKHEMTLKFPSIKTDNMLSD QTPTPTRFLKNCEEVGLFSELDCSLEHEFRKAQEEESSKRNISMHNAVGGAMTGPG THQLSSARLPNHDTNVVIQQAMPSPQSSSVITQAPSTNRQIGPVPGLSLLHLHNR QRQPMPASMPGTLNPTMPGSSAVLMPMERQMSVNSSIMGMQGPNLSPCASPQ VQPMHSEAKMRLKAALHTHPAAMSNGNMNTMGHMMEMMGSRQDQTPHHMHHS HPHQHQTLPHPHPYPHQHQHPAHPHPQPHHQQNHPHHHSHSHLHAHPAHHQTS PHPLHTGNQAQVSPATQQMQPTQTIQPPQPTGGRRRRRVDEDPDERRRKFLEARN RAAATRCRQKRKVVVMSLEKKAELTQTNMQLQNEVSMLKNEVAQLKQLLLTHKD

 Tel: 1-631-559-9269 1-516-512-3133

 Email: info@creative-biomart.com  Fax: 1-631-938-8127

 45-1 Ramsey Road, Shirley, NY 11967, USA

CPITAMQKESQGYLSPPESSPPASPVPACSQQQVIQHNTITTTSSSVSEVVGSSTLSQL
TTHRTDLNPIL

Applications	Enzyme-linked Immunoabsorbent Assay Western Blot (Recombinant protein) Antibody Production Protein Array
Notes	Best use within three months from the date of receipt of this protein.
Storage	Store at -80 centigrade. Aliquot to avoid repeated freezing and thawing.
Storage Buffer	50 mM Tris-HCl, 10 mM reduced Glutathione, pH=8.0 in the elution buffer.

GENE INFORMATION

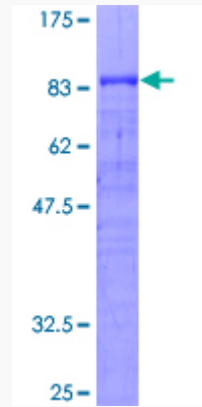
Gene Name	CREB5 cAMP responsive element binding protein 5 [Homo sapiens]
Official Symbol	CREB5
Synonyms	CREB5; cAMP responsive element binding protein 5; cyclic AMP-responsive element-binding protein 5; cAMP response element binding protein CRE Bpa; CRE BPA; H_GS165L15.1; CREB-5; cAMP-responsive element-binding protein 5; cAMP response element binding protein CRE-Bpa; cAMP response element-binding protein CRE-BPa; cAMP responsive element binding protein 5 isoform alpha; CRE-BPA;
Gene ID	9586
mRNA Refseq	NM_001011666
Protein Refseq	NP_001011666

UniProt ID

Q02930

Quality Control

Testing:



12.5% SDS-PAGE Stained with Coomassie Blue.

 Tel: 1-631-559-9269 1-516-512-3133

 Email: info@creative-biomart.com  Fax: 1-631-938-8127

 45-1 Ramsey Road, Shirley, NY 11967, USA