

Recombinant Dog Crebbp Protein, His tagged

Cat. No. CREBBP-01D Lot. No. (See product label)

SPECIFICATION

Product Overview Recombinant Dog Crebbp Protein with His tag was expressed in HEK293.

Species Dog

Source HEK293

Description

This gene is ubiquitously expressed and is involved in the transcriptional coactivation of many different transcription factors. First isolated as a nuclear protein that binds to cAMP-response element binding protein (CREB), this gene is now known to play critical roles in embryonic development, growth control, and homeostasis by coupling chromatin remodeling to transcription factor recognition. The protein encoded by this gene has intrinsic histone acetyltransferase activity and also acts as a scaffold to stabilize additional protein interactions with the transcription complex. This protein acetylates both histone and non-histone proteins. This protein shares regions of very high sequence similarity with protein p300 in its bromodomain, cysteine-histidine-rich regions, and histone acetyltransferase domain. Mutations in this gene cause Rubinstein-Taybi syndrome (RTS). Chromosomal translocations involving this gene have been associated with acute myeloid leukemia. Alternative splicing results in multiple transcript variants encoding different isoforms.

Molecular Mass The protein has a calculated MW of 44 kDa.

AA Sequence

HHHHHHHHKFSAKRLQTTRLGNHLEDRVNKFLRRQNHPEAGEVFVRVVASSDKTV
EVKPGMKSRFVDSGEMSESFYRTRKALFAFEEIDGVDVCFFGMHVQEYGSDCPPP

 Tel: 1-631-559-9269 1-516-512-3133

 Email: info@creative-biomart.com  Fax: 1-631-938-8127

 45-1 Ramsey Road, Shirley, NY 11967, USA

NTRRVYISYLDSEIHFFRPRCLRTAVYHEILIGYLEYVKKLGYVTGHIWACPPSEGDDYI
 FHCHPPDQKIPKPKRLQEWYKKMLDKAFAERIIHDYKDIFKQATEDRLTSAKELPYFE
 GDFWPNVLEESIKELEQEEEEERKKEESTAASETTEGSQGDSKNAKKKNNKKTNKNK
 SSISRANKKKPSMPNV/SNDLSQKLYATMEKHKEVFFVIHLHAGPVINTLPPIVDPDPL
 LSCDLMDGRDAFLTARDKHWEFSSLRRSKWSTLCMLVELHTQGQ

| | |
|-----------------------|---|
| Endotoxin | < 1 EU/μg by LAL |
| Purity | > 90% by SDS-PAGE |
| Storage | Store it under sterile conditions at -20 to -80 centigrade. It is recommended that the protein be aliquoted for optimal storage. Avoid repeated freeze-thaw cycles. |
| Concentration | 0.36 mg/mL by BCA |
| Storage Buffer | PBS, pH 7.4, 1% SKL |

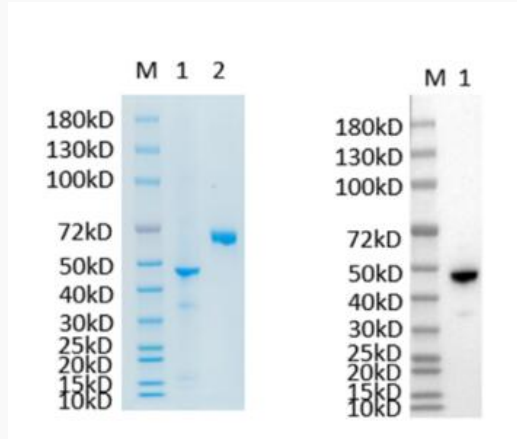
GENE INFORMATION

| | |
|------------------------|---|
| Gene Name | CREBBP CREB binding protein [<i>Canis lupus familiaris</i>] |
| Official Symbol | CREBBP |
| Synonyms | CREBBP; CREB binding protein; CREB-binding protein; CREB binding protein (Rubinstein-Taybi syndrome); |
| Gene ID | 479866 |
| mRNA Refseq | XM_038667646 |
| Protein Refseq | XP_038523574 |

UniProt ID

A0A8C0YZ36

Reducing 12% SDS-PAGE (CBB stained) and WB (Anti-His Mouse Monoclonal Antibody) analysis profile of purified CREBBP.



1. CREBBP
2. BSA

 Tel: 1-631-559-9269 1-516-512-3133

 Email: info@creative-biomart.com  Fax: 1-631-938-8127

 45-1 Ramsey Road, Shirley, NY 11967, USA