

## Recombinant Human CREBBP Protein, GST-tagged

Cat. No. CREBBP-1852H Lot. No. (See product label)

### SPECIFICATION

<b>Product Overview</b>	Human CREBBP partial ORF ( NP_004371, 951 a.a. - 1050 a.a.) recombinant protein with GST-tag at N-terminal.
<b>Species</b>	Human
<b>Source</b>	Wheat Germ
<b>Description</b>	<p>This gene is ubiquitously expressed and is involved in the transcriptional coactivation of many different transcription factors. First isolated as a nuclear protein that binds to cAMP-response element binding protein (CREB), this gene is now known to play critical roles in embryonic development, growth control, and homeostasis by coupling chromatin remodeling to transcription factor recognition. The protein encoded by this gene has intrinsic histone acetyltransferase activity and also acts as a scaffold to stabilize additional protein interactions with the transcription complex. This protein acetylates both histone and non-histone proteins. This protein shares regions of very high sequence similarity with protein p300 in its bromodomain, cysteine-histidine-rich regions, and histone acetyltransferase domain. Mutations in this gene cause Rubinstein-Taybi syndrome (RTS). Chromosomal translocations involving this gene have been associated with acute myeloid leukemia. Alternative splicing results in multiple transcript variants encoding different isoforms. [provided by RefSeq, Feb 2009]</p>
<b>Molecular Mass</b>	36.74 kDa

 Tel: 1-631-559-9269 1-516-512-3133

 Email: [info@creative-biomart.com](mailto:info@creative-biomart.com)  Fax: 1-631-938-8127

 45-1 Ramsey Road, Shirley, NY 11967, USA

<b>AA Sequence</b>	PVHAQPPGTPLSQAAAASIDNRVPTPSSVASAETNSQQPGPDVPVLEMKTETQAEDT EPDPGESKGEPRSEMMEEDLQGASQVKEETDIAEQKSEPMEVDE
<b>Applications</b>	Enzyme-linked Immunoabsorbent Assay Western Blot (Recombinant protein) Antibody Production Protein Array
<b>Notes</b>	Best use within three months from the date of receipt of this protein.
<b>Storage</b>	Store at -80 centigrade. Aliquot to avoid repeated freezing and thawing.
<b>Storage Buffer</b>	50 mM Tris-HCl, 10 mM reduced Glutathione, pH=8.0 in the elution buffer.

## GENE INFORMATION

<b>Gene Name</b>	CREBBP CREB binding protein [ Homo sapiens ]
<b>Official Symbol</b>	CREBBP
<b>Synonyms</b>	CREBBP; CREB binding protein; RSTS, Rubinstein Taybi syndrome; CREB-binding protein; CBP; KAT3A; RTS; RSTS;
<b>Gene ID</b>	1387
<b>mRNA Refseq</b>	NM_001079846
<b>Protein Refseq</b>	NP_001073315
<b>MIM</b>	600140

 Tel: 1-631-559-9269 1-516-512-3133

 Email: [info@creative-biomart.com](mailto:info@creative-biomart.com)  Fax: 1-631-938-8127

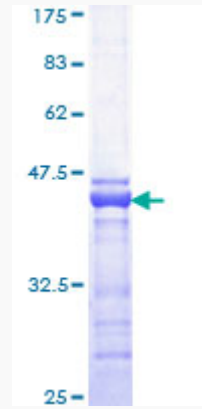
 45-1 Ramsey Road, Shirley, NY 11967, USA

UniProt ID

Q92793

Quality Control

Testing:



12.5% SDS-PAGE Stained with Coomassie Blue.

 Tel: 1-631-559-9269 1-516-512-3133

 Email: [info@creative-biomart.com](mailto:info@creative-biomart.com)  Fax: 1-631-938-8127

 45-1 Ramsey Road, Shirley, NY 11967, USA