

# Recombinant Human CREBBP 293 Cell Lysate

**Cat. No.** CREBBP-22HCL    **Lot. No.** (See product label)

## SPECIFICATION

### Product Overview

Transient overexpression lysate of CREB binding protein (CREBBP), transcript variant 1 carries a C-terminal Myc/DDK tag was prepared from HEK293T cells. The cells were lysed in modified RIPA buffer (25mM Tris-HCl pH7.6, 150mM NaCl, 1% NP-40, 1mM EDTA, 1xProteinase inhibitor cocktail mix, 1mM PMSF and 1mM Na3VO4), and then centrifuged to clarify the lysate. Protein concentration was measured by BCA kit. Cell lysates were aliquoted and stored at -20 centigrade before shipping.

Components:

- 1 vial of 100 g gene specific transient over-expression cell lysate in RIPA buffer
- 1 vial of 100 g empty vector transfected control cell lysate in RIPA buffer
- 1 vial of 250ul 2xSDS Sample Buffer (4% SDS, 125mM Tris-HCl pH6.8, 10% Glycerol, 0.002% Bromphenol blue, 100mM DTT)

### Species

Human

### Source

HEK293

### Description

This gene is ubiquitously expressed and is involved in the transcriptional coactivation of many different transcription factors. First isolated as a nuclear protein that binds to cAMP-response element binding protein (CREB), this gene is now known to play critical roles in embryonic development, growth control, and homeostasis by coupling chromatin remodeling to transcription factor recognition. The protein encoded by this gene has intrinsic histone acetyltransferase activity and also acts as a scaffold to stabilize additional protein interactions with the transcription complex. This protein

 Tel: 1-631-559-9269    1-516-512-3133

 Email: [info@creative-biomart.com](mailto:info@creative-biomart.com)     Fax: 1-631-938-8127

 45-1 Ramsey Road, Shirley, NY 11967, USA

acetylates both histone and non-histone proteins. This protein shares regions of very high sequence similarity with protein p300 in its bromodomain, cysteine-histidine-rich regions, and histone acetyltransferase domain. Mutations in this gene cause Rubinstein-Taybi syndrome (RTS). Chromosomal translocations involving this gene have been associated with acute myeloid leukemia. Alternative splicing results in multiple transcript variants encoding different isoforms.

**Molecular Mass** 265.2 kDa

**Storage**

The lysate is shipped with dry ice. Upon receiving, store the sample at -20 centigrade. Avoid repeated freeze-thaw cycles. Lysate samples can be diluted with 2xSDS Sample Buffer provided. After dilution, the protein sample should be aliquoted and stored at -20 centigrade for long term storage. Lysate samples are stable for 12 months from date of receipt when stored at -20 centigrade.

## GENE INFORMATION

**Gene Name** CREBBP CREB binding protein [ Homo sapiens (human) ]

**Official Symbol** CREBBP

**Synonyms** CREBBP; CREB binding protein; CBP; RSTS; KAT3A; MKHK1; RSTS1; CREB-binding protein; EC 2.3.1.48

**Gene ID** 1387

**mRNA Refseq** NM\_004380

**Protein Refseq** NP\_004371

**MIM** 600140

 Tel: 1-631-559-9269 1-516-512-3133

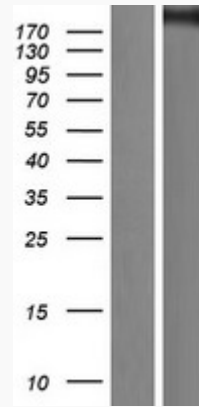
 Email: [info@creative-biomart.com](mailto:info@creative-biomart.com)  Fax: 1-631-938-8127

 45-1 Ramsey Road, Shirley, NY 11967, USA



UniProt ID

Q92793



Tel: 1-631-559-9269 1-516-512-3133

Email: [info@creative-biomart.com](mailto:info@creative-biomart.com) Fax: 1-631-938-8127

45-1 Ramsey Road, Shirley, NY 11967, USA