

Recombinant Human CREBBP protein, His&FLAG-tagged

Cat. No. CREBBP-2815H Lot. No. (See product label)

SPECIFICATION

Product Overview	Recombinant Human CREBBP protein(accession number NM_004380.2)(1081-1197 aa) was expressed in E. coli and contains an N-terminal His-Tag and C-terminal FLAG-Tag.
Species	Human
Source	E.coli
ProteinLength	1081-1197 aa
Form	Supplied in 25 mM Tris pH 8.0, 150 mM NaCl, 10% glycerol.
Bio-activity	3 μ M H4K5/8/12/16 (ac4) peptide was incubated with different concentrations of CREBBP (1081-1197) protein in 10 μ l reaction system containing 50 mM HEPES-NaOH pH 7.5, 0.1% BSA for 1 hour, then 10 μ l FLAG antibody and SA-XL665 mixture (1:100 dilution in reaction buffer) was added to each reaction system and incubated for 1 hour. All the operations and reactions were performed at room temperature. HTRF assay was used for detection.
Molecular Mass	18.7 kDa
Purity	>85% pure by SDS-PAGE.
Storage	Recombinant proteins in solution are temperature sensitive and must be stored at -80°C to prevent degradation. Avoid repeated freeze/thaw cycles and keep on ice

 Tel: 1-631-559-9269 1-516-512-3133

 Email: info@creative-biomart.com  Fax: 1-631-938-8127

 45-1 Ramsey Road, Shirley, NY 11967, USA

when not in storage.

Reconstitution

It is recommended that sterile water be added to the vial to prepare a stock solution of 0.2 ug/ul. Centrifuge the vial at 4°C before opening to recover the entire contents.

GENE INFORMATION

Gene Name [CREBBP CREB binding protein \[Homo sapiens \]](#)

Official Symbol [CREBBP](#)

Synonyms CREBBP; CREB binding protein; RSTS, Rubinstein Taybi syndrome; CREB-binding protein; CBP; KAT3A; RTS; RSTS;

Gene ID [1387](#)

mRNA Refseq [NM_001079846](#)

Protein Refseq [NP_001073315](#)

MIM [600140](#)

UniProt ID [Q92793](#)

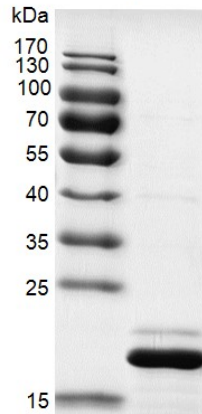
 Tel: 1-631-559-9269 1-516-512-3133

 Email: info@creative-biomart.com  Fax: 1-631-938-8127

 45-1 Ramsey Road, Shirley, NY 11967, USA

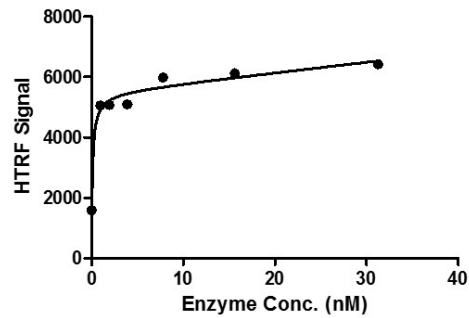
SDS-PAGE

CREBBP (1081-1197)



Activity

CREBBP (1081-1197)



 Tel: 1-631-559-9269 1-516-512-3133

 Email: info@creative-biomart.com  Fax: 1-631-938-8127

 45-1 Ramsey Road, Shirley, NY 11967, USA