

Recombinant Human CREBL2 Protein, GST-tagged

Cat. No. CREBL2-1854H **Lot. No.** (See product label)

SPECIFICATION

Product Overview	Human CREBL2 full-length ORF (NP_001301.1, 1 a.a. - 120 a.a.) recombinant protein with GST-tag at N-terminal.
Species	Human
Source	Wheat Germ
Description	cAMP response element (CRE)-binding protein-like-2 (CREBL2) was identified in a search to find genes in a commonly deleted region on chromosome 12p13 flanked by ETV6 and CDKN1B genes, frequently associated with hematopoietic malignancies, as well as breast, non-small-cell lung and ovarian cancers. CREBL2 shares a 41% identity with CRE-binding protein (CREB) over a 48-base long region which encodes the bZip domain of CREB. The bZip domain consists of about 30 amino acids rich in basic residues involved in DNA binding, followed by a leucine zipper motif involved in protein dimerization. This suggests that CREBL2 encodes a protein with DNA binding capabilities. The occurrence of CREBL2 deletion in malignancy suggests that CREBL2 may act as a tumor suppressor gene. [provided by RefSeq, Jul 2008]
Molecular Mass	40.2 kDa
AA Sequence	MDDSKVVGKVKKPGKRGRKPAKIDLKAKLERSRQSARECRARKKLRYQYLEELVSRERAICALREELEMYKQWCMAMDQGKIPSEIKALLTGEEQNKSQQNSSRHTKAGKTDANSNSW
Applications	Enzyme-linked Immunoabsorbent Assay

 Tel: 1-631-559-9269 1-516-512-3133

 Email: info@creative-biomart.com  Fax: 1-631-938-8127

 45-1 Ramsey Road, Shirley, NY 11967, USA

Western Blot (Recombinant protein)
 Antibody Production
 Protein Array

Notes	Best use within three months from the date of receipt of this protein.
Storage	Store at -80 centigrade. Aliquot to avoid repeated freezing and thawing.
Storage Buffer	50 mM Tris-HCl, 10 mM reduced Glutathione, pH=8.0 in the elution buffer.

GENE INFORMATION

Gene Name	CREBL2 cAMP responsive element binding protein-like 2 [Homo sapiens]
Official Symbol	CREBL2
Synonyms	CREBL2; cAMP responsive element binding protein-like 2; cAMP-responsive element-binding protein-like 2; MHBs-binding protein 1; MGC117311; MGC138362;
Gene ID	1389
mRNA Refseq	NM_001310
Protein Refseq	NP_001301
MIM	603476
UniProt ID	O60519

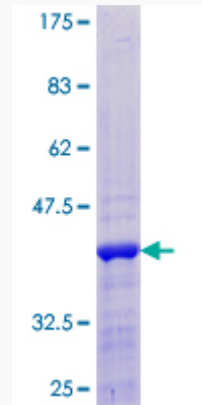
 Tel: 1-631-559-9269 1-516-512-3133

 Email: info@creative-biomart.com  Fax: 1-631-938-8127

 45-1 Ramsey Road, Shirley, NY 11967, USA

Quality Control

Testing:



12.5% SDS-PAGE Stained with Coomassie Blue.

 Tel: 1-631-559-9269 1-516-512-3133

 Email: info@creative-biomart.com  Fax: 1-631-938-8127

 45-1 Ramsey Road, Shirley, NY 11967, USA