

Recombinant Human CREG1 Protein, Myc/DDK-tagged, C13 and N15-labeled

Cat. No. CREG1-6439H **Lot. No.** (See product label)

SPECIFICATION

Product Overview	CREG1 MS Standard C13 and N15-labeled recombinant protein (NP_003842) with a C-terminal MYC/DDK tag, was expressed in HEK293 cells.
Species	Human
Source	HEK293
Description	The adenovirus E1A protein both activates and represses gene expression to promote cellular proliferation and inhibit differentiation. The protein encoded by this gene antagonizes transcriptional activation and cellular transformation by E1A. This protein shares limited sequence similarity with E1A and binds both the general transcription factor TBP and the tumor suppressor pRb in vitro. This gene may contribute to the transcriptional control of cell growth and differentiation.
Molecular Mass	24.1 kDa
AA Sequence	MAGLSRGSARALLAALLASTLLALLVSPARGRGGRDHGDWDEASRLPPLPPREDAA RVARFVTHVSDWGALATISTLEAVRGRPFADVLSLSDGPPGAGSGVPYFYLSPLQLS VSNLQENPYATLMTLAQTNFCKKHGFD PQSPLCVHIMLSGTVTKVNETEMDIAKHS LFIRHPEMKTWPSSHNWFFAKLNITNIWVLDYFGGPKIVTPEEYYNVTVQTRTRPLE QKLISEEDLAANDILDYKDDDDKV
Purity	> 80% as determined by SDS-PAGE and Coomassie blue staining

 Tel: 1-631-559-9269 1-516-512-3133

 Email: info@creative-biomart.com  Fax: 1-631-938-8127

 45-1 Ramsey Road, Shirley, NY 11967, USA

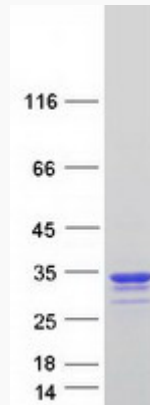
Stability	Stable for 3 months from receipt of products under proper storage and handling conditions.
Storage	Store at -80 centigrade. Avoid repeated freeze-thaw cycles.
Concentration	50 µg/mL as determined by BCA
Storage Buffer	100 mM glycine, 25 mM Tris-HCl, pH 7.3.
GENE INFORMATION	
Gene Name	CREG1 cellular repressor of E1A-stimulated genes 1 [Homo sapiens (human)]
Official Symbol	CREG1
Synonyms	CREG1; cellular repressor of E1A-stimulated genes 1; cellular repressor of E1A stimulated genes, CREG; protein CREG1; CREG;
Gene ID	8804
mRNA Refseq	NM_003851
Protein Refseq	NP_003842
MIM	618055
UniProt ID	O75629

 Tel: 1-631-559-9269 1-516-512-3133

 Email: info@creative-biomart.com  Fax: 1-631-938-8127

 45-1 Ramsey Road, Shirley, NY 11967, USA

SDS-PAGE



 Tel: 1-631-559-9269 1-516-512-3133

 Email: info@creative-biomart.com  Fax: 1-631-938-8127

 45-1 Ramsey Road, Shirley, NY 11967, USA