

Recombinant Human CRELD1 Protein, GST-tagged

Cat. No. CRELD1-1860H **Lot. No.** (See product label)

SPECIFICATION

Product Overview	Human CRELD1 partial ORF (NP_056328.2, 245 a.a. - 344 a.a.) recombinant protein with GST-tag at N-terminal.
Species	Human
Source	Wheat Germ
Description	This gene encodes a member of a subfamily of epidermal growth factor-related proteins. The encoded protein is characterized by a cysteine-rich with epidermal growth factor-like domain. This protein may function as a cell adhesion molecule. Mutations in this gene are the cause of atrioventricular septal defect. Alternate splicing results in multiple transcript variants.[provided by RefSeq, Apr 2010]
Molecular Mass	36.74 kDa
AA Sequence	DIDECGTEGANCGADQFCVNTEGSYECRDCAKACLGCMGAGPGRCKKCSPGYQQ VGSKCLDVDECETEVCPCGENKQCENTEGGYRCICAEGYKQMEGICV
Applications	Enzyme-linked Immunoabsorbent Assay Western Blot (Recombinant protein) Antibody Production Protein Array
Notes	Best use within three months from the date of receipt of this protein.

 Tel: 1-631-559-9269 1-516-512-3133

 Email: info@creative-biomart.com  Fax: 1-631-938-8127

 45-1 Ramsey Road, Shirley, NY 11967, USA

Storage Store at -80 centigrade. Aliquot to avoid repeated freezing and thawing.

Storage Buffer 50 mM Tris-HCl, 10 mM reduced Glutathione, pH=8.0 in the elution buffer.

GENE INFORMATION

Gene Name CRELD1 cysteine rich with EGF like domains 1 [Homo sapiens (human)]

Official Symbol CRELD1

Synonyms CRELD1; cysteine rich with EGF like domains 1; Cysteine Rich With EGF Like Domains 1; CIRRIIN; Cysteine-Rich With EGF-Like Domain Protein 1; Cysteine-Rich With EGF-Like Domains 1; Cysteine Rich With EGF-Like Domains 1; Atrioventricular Septal Defect 2; AVSD2; cysteine-rich with EGF-like domain protein 1

Gene ID 78987

mRNA Refseq NM_001031717

Protein Refseq NP_001026887

MIM 607170

UniProt ID Q96HD1

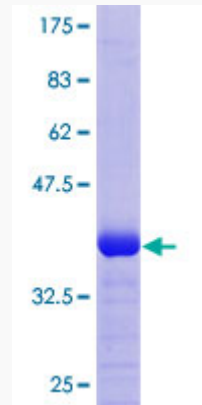
 Tel: 1-631-559-9269 1-516-512-3133

 Email: info@creative-biomart.com  Fax: 1-631-938-8127

 45-1 Ramsey Road, Shirley, NY 11967, USA

Quality Control

Testing:



12.5% SDS-PAGE Stained with Coomassie Blue.

 Tel: 1-631-559-9269 1-516-512-3133

 Email: info@creative-biomart.com  Fax: 1-631-938-8127

 45-1 Ramsey Road, Shirley, NY 11967, USA