

## Recombinant Human CRELD2 Protein, GST-tagged

Cat. No. CRELD2-1861H Lot. No. (See product label)

### SPECIFICATION

|                         |   |
|-------------------------|---|
| <b>Product Overview</b> | Human CRELD2 full-length ORF ( AAH02894.1, 1 a.a. - 321 a.a.) recombinant protein with GST-tag at N-terminal.   |
| <b>Species</b>          | Human   |
| <b>Source</b>           | Wheat Germ  |
| <b>Description</b>      | CRELD2 (Cysteine Rich With EGF Like Domains 2) is a Protein Coding gene. GO annotations related to this gene include calcium ion binding. An important paralog of this gene is CRELD1.  |
| <b>Molecular Mass</b>   | 61.4 kDa  |
| <b>AA Sequence</b>      | MRLPRRAALGLLPLLLLLPPAPEAAKKPTPCHRCRGLVDKFNQGMVDTAKKNFGGG<br>NTAWEEKTLKYESSEIRLLEILEGLCESSDFECNQMLEAQEEHLEAWWLQLKSEYP<br>DLFEWFCVKTLKVCCSPGTYGPDCLACQGGSQRPCSGNGHCSGDGSRQGDGSC<br>RCHMGYQGPLCTDCMDGYFSSLRNETHSICTACDESKTCSGLTNRDCGECEVG<br>WVLDEGACVDVDECAAEPSPCSAAQFCKNANGSYTCEDVDECSLAEKTCVRKNEN<br>CYNTPGSYVCVCPDGFEETEDACVPPAEAEATEGESPTQLPSREDL |
| <b>Applications</b>     | Enzyme-linked Immunoabsorbent Assay<br>Western Blot (Recombinant protein)<br>Antibody Production<br>Protein Array   |

 Tel: 1-631-559-9269 1-516-512-3133

 Email: [info@creative-biomart.com](mailto:info@creative-biomart.com)  Fax: 1-631-938-8127

 45-1 Ramsey Road, Shirley, NY 11967, USA

|                       |  |
|-----------------------|--|
| <b>Notes</b>          | Best use within three months from the date of receipt of this protein.   |
| <b>Storage</b>        | Store at -80 centigrade. Aliquot to avoid repeated freezing and thawing. |
| <b>Storage Buffer</b> | 50 mM Tris-HCl, 10 mM reduced Glutathione, pH=8.0 in the elution buffer. |

## GENE INFORMATION

|                        |  |
|------------------------|--|
| <b>Gene Name</b>       | CRELD2 cysteine-rich with EGF-like domains 2 [ Homo sapiens ]  |
| <b>Official Symbol</b> | CRELD2   |
| <b>Synonyms</b>        | CRELD2; cysteine-rich with EGF-like domains 2; cysteine-rich with EGF-like domain protein 2; MGC11256; DKFZp667O055; |
| <b>Gene ID</b>         | 79174  |
| <b>mRNA Refseq</b>     | NM_001135101   |
| <b>Protein Refseq</b>  | NP_001128573   |
| <b>MIM</b>             | 607171   |
| <b>UniProt ID</b>      | Q6UXH1   |

 Tel: 1-631-559-9269 1-516-512-3133

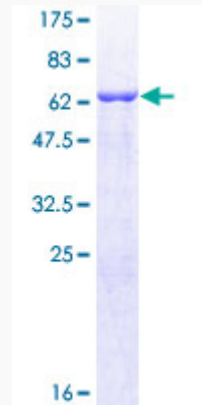
 Email: [info@creative-biomart.com](mailto:info@creative-biomart.com)  Fax: 1-631-938-8127

 45-1 Ramsey Road, Shirley, NY 11967, USA



**Quality Control**

**Testing:**



12.5% SDS-PAGE Stained with Coomassie Blue.

Tel: 1-631-559-9269 1-516-512-3133

Email: [info@creative-biomart.com](mailto:info@creative-biomart.com) Fax: 1-631-938-8127

45-1 Ramsey Road, Shirley, NY 11967, USA