

Recombinant Full Length Human CRELD2 Protein, C-Flag-tagged

Cat. No. CRELD2-709HFL **Lot. No.** (See product label)

SPECIFICATION

Product Overview	Recombinant Full Length Human CRELD2 Protein, fused to Flag-tag at C-terminus, was expressed in Mammalian cells.
Species	Human
Source	Mammalian Cells
Description	Predicted to enable calcium ion binding activity and protein disulfide isomerase activity. Predicted to be located in Golgi apparatus; endoplasmic reticulum; and extracellular space.
Form	25 mM Tris HCl, pH 7.3, 100 mM glycine, 10% glycerol.
Molecular Mass	38 kDa
AA Sequence	<p>MRLPRAALGLLPLLLLLPPAPEAAKKPTPCHRCRGLVDKFNQGMVDTAKKNFGGG NTAWEEKTLISKYES SEIRLLEILEGLCESSDFECNQMLEAQEEHLEAWWLQKSEY PDLFEWFVCVKTLKVCCSPGTYGPDCLAC QGGSQRPCSGNGHCSGDGSRQGDGS CRCHMGYQGPLCTDCMDGYFSSLRNETHSICTACDESCKTCSGLT NRDCGECEV GWVLDEGACVDVDECAAEPPPCSAAQFCKNANGSYTCEECDSSCVGCTGEGPGN CKECISG YAREHGQCADVDECALAEKTCVRKNENCYNTPGSYVCVCPDGFEGTED ACVPPAEAEATEGESPTQLPSR EDLTRTRPLEQKLISEEDLAANDILDYKDDDDKV</p>

 Tel: 1-631-559-9269 1-516-512-3133

 Email: info@creative-biomart.com  Fax: 1-631-938-8127

 45-1 Ramsey Road, Shirley, NY 11967, USA

Purity	> 80% as determined by SDS-PAGE and Coomassie blue staining.
Stability	Stable for 12 months from the date of receipt of the product under proper storage and handling conditions. Avoid repeated freeze-thaw cycles.
Storage	Store at -80 centigrade.
Concentration	>50 ug/mL as determined by microplate BCA method.
Preparation	Recombinant protein was captured through anti-DDK affinity column followed by conventional chromatography steps.
Protein Families	Druggable Genome, Secreted Protein
Full Length	Full L.

GENE INFORMATION

Gene Name	CRELD2 cysteine rich with EGF like domains 2 [Homo sapiens (human)]
Official Symbol	CRELD2
Synonyms	DKFZp667O055; MGC11256
Gene ID	79174
mRNA Refseq	NM_024324.5
Protein Refseq	NP_077300.3
MIM	607171

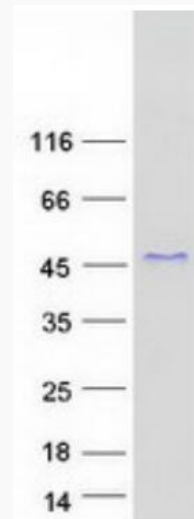
 Tel: 1-631-559-9269 1-516-512-3133

 Email: info@creative-biomart.com  Fax: 1-631-938-8127

 45-1 Ramsey Road, Shirley, NY 11967, USA

UniProt ID

Q6UXH1



Coomassie blue staining of purified CRELD2 protein.

 Tel: 1-631-559-9269 1-516-512-3133

 Email: info@creative-biomart.com  Fax: 1-631-938-8127

 45-1 Ramsey Road, Shirley, NY 11967, USA