

Recombinant Human CREM Protein, GST-tagged

Cat. No. CREM-1862H Lot. No. (See product label)

SPECIFICATION

Product Overview	Human CREM full-length ORF (NP_001872.3, 1 a.a. - 137 a.a.) recombinant protein with GST-tag at N-terminal.
Species	Human
Source	Wheat Germ
Description	This gene encodes a bZIP transcription factor that binds to the cAMP responsive element found in many viral and cellular promoters. It is an important component of cAMP-mediated signal transduction during the spermatogenic cycle, as well as other complex processes. Alternative promoter and translation initiation site usage allows this gene to exert spatial and temporal specificity to cAMP responsiveness. Multiple alternatively spliced transcript variants encoding several different isoforms have been found for this gene, with some of them functioning as activators and some as repressors of transcription. [provided by RefSeq, Jul 2008]
Molecular Mass	41.3 kDa
AA Sequence	MTMETVESQHDGSITASLTESKSAHVQTQTGQNSIPALAQVAAIAETDESAESEGVI DSHKRREILSRRPSYRKILNELSSDVPGVPKIEEERSEEEGTPPSIATMAVPTSIYQTS TGQYSMYAAIRYDTVLALSLL
Applications	Enzyme-linked Immunoabsorbent Assay Western Blot (Recombinant protein) Antibody Production

Tel: 1-631-559-9269 1-516-512-3133

Email: info@creative-biomart.com Fax: 1-631-938-8127

45-1 Ramsey Road, Shirley, NY 11967, USA

Protein Array

Notes	Best use within three months from the date of receipt of this protein.
Storage	Store at -80 centigrade. Aliquot to avoid repeated freezing and thawing.
Storage Buffer	50 mM Tris-HCl, 10 mM reduced Glutathione, pH=8.0 in the elution buffer.

GENE INFORMATION

Gene Name	CREM cAMP responsive element modulator [Homo sapiens]
Official Symbol	CREM
Synonyms	CREM; cAMP responsive element modulator; cAMP-responsive element modulator; hCREM 2; CREM 2beta-a protein; CREM 2alpha-b protein; cAMP response element modulator; inducible cAMP early repressor ICER; ICER; CREM-2; hCREM-2; MGC17881; MGC41893; MGC111110;
Gene ID	1390
mRNA Refseq	NM_001881
Protein Refseq	NP_001872
MIM	123812
UniProt ID	Q03060

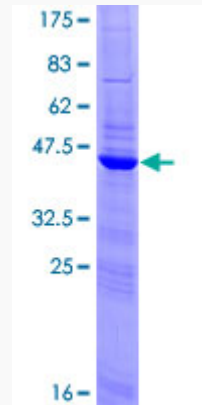
 Tel: 1-631-559-9269 1-516-512-3133

 Email: info@creative-biomart.com  Fax: 1-631-938-8127

 45-1 Ramsey Road, Shirley, NY 11967, USA

Quality Control

Testing:



12.5% SDS-PAGE Stained with Coomassie Blue.

 Tel: 1-631-559-9269 1-516-512-3133

 Email: info@creative-biomart.com  Fax: 1-631-938-8127

 45-1 Ramsey Road, Shirley, NY 11967, USA