

Recombinant Full Length Human CRH Protein, GST tagged

Cat. No. CRH-107H Lot. No. (See product label)

SPECIFICATION

Product Overview	Human CRH full-length ORF (NP_000747.1, 1-196 aa) recombinant protein with GST-tag at N-terminal was expressed in vitro.
Species	Human
Source	In Vitro Cell Free System
ProteinLength	1-196 aa
Description	Corticotropin-releasing hormone (CRH) is a 41-amino acid peptide derived from a 191-amino acid preprohormone. CRH is secreted by the paraventricular nucleus (PVN) of the hypothalamus in response to stress. Marked reduction in CRH has been observed in association with Alzheimer disease and autosomal recessive hypothalamic corticotropin deficiency has multiple and potentially fatal metabolic consequences including hypoglycemia and hepatitis. In addition to production in the hypothalamus, CRH is also synthesized in peripheral tissues, such as T lymphocytes and is highly expressed in the placenta. In the placenta CRH is a marker that determines the length of gestation and the timing of parturition and delivery. A rapid increase in circulating levels of CRH occurs at the onset of parturition, suggesting that, in addition to its metabolic functions, CRH may act as a trigger for parturition.
Molecular Mass	47.8 kDa
AA Sequence	MRLPLLVSAGVLLVALLPCPPCRALLSRGPVPGARQAPQHPQPLDFFQPPPQSEQP QQPQARPVLLRMGEEYFLRLGNLNKSPAAPLSPASSLLAGGSGSRPSPEQATANFF

 Tel: 1-631-559-9269 1-516-512-3133

 Email: info@creative-biomart.com  Fax: 1-631-938-8127

 45-1 Ramsey Road, Shirley, NY 11967, USA

RVLLQQLLLPRRSLDSPAALAERGARNALGGHQEAPERERRSEEPPISLDLTFHLLR
EVLEMARAEQLAQQAHSNRKLMEIIGK

Application

Enzyme-linked Immunoabsorbent Assay Western Blot (Recombinant protein)
Antibody Production Protein Array

Quality Control Testing

12.5% SDS-PAGE Stained with Coomassie Blue.

Note

Best use within three months from the date of receipt of this protein.

Storage

Store at -80 centigrade. Aliquot to avoid repeated freezing and thawing.

Storage Buffer

50 mM Tris-HCl, 10 mM reduced Glutathione, pH8.0 in the elution buffer.

GENE INFORMATION

Gene Name

CRH corticotropin releasing hormone [Homo sapiens (human)]

Official Symbol

CRH

Synonyms

CRH; corticotropin releasing hormone; corticoliberin; corticotropin releasing factor;
CRF; corticotropin-releasing factor;

Gene ID

1392

mRNA Refseq

NM_000756

Protein Refseq

NP_000747

MIM

122560

 Tel: 1-631-559-9269 1-516-512-3133

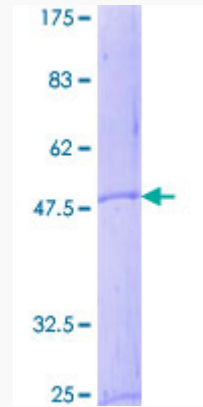
 Email: info@creative-biomart.com  Fax: 1-631-938-8127

 45-1 Ramsey Road, Shirley, NY 11967, USA

UniProt ID

P06850

SDS-PAGE



 Tel: 1-631-559-9269 1-516-512-3133

 Email: info@creative-biomart.com  Fax: 1-631-938-8127

 45-1 Ramsey Road, Shirley, NY 11967, USA