

Recombinant Human CRH Protein (His40-Gly195), N-His tagged

Cat. No. CRH-1806H Lot. No. (See product label)

SPECIFICATION

Product Overview	Recombinant human CRH (His40-Gly195) fused with N-His tag was expressed in E. coli.
Species	Human
Source	E.coli
ProteinLength	His40-Gly195
Form	Lyophilized powder/frozen liquid
Molecular Mass	19.59 kDa
Purity	>90% as determined by SDS-PAGE
Notes	For research use only.
Storage	Use a manual defrost freezer and avoid repeated freeze thaw cycles. Store at 2 to 8 centigrade for one week. Store at -20 to -80 centigrade for twelve months from the date of receipt.
Storage Buffer	0.01M PBS, pH 7.4, 0.02% NLS
Reconstitution	Reconstitute in sterile water for a stock solution.

 Tel: 1-631-559-9269 1-516-512-3133

 Email: info@creative-biomart.com  Fax: 1-631-938-8127

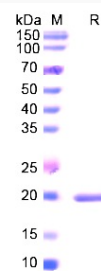
 45-1 Ramsey Road, Shirley, NY 11967, USA

Shipping They are shipped out with dry ice/blue ice unless customers require otherwise.

GENE INFORMATION

Gene Name	CRH corticotropin releasing hormone [Homo sapiens (human)]
Official Symbol	CRH
Synonyms	CRH; corticotropin releasing hormone; corticoliberin; corticotropin releasing factor; CRF; corticotropin-releasing factor;
Gene ID	1392
mRNA Refseq	NM_000756
Protein Refseq	NP_000747
MIM	122560
UniProt ID	P06850

SDS-PAGE



 Tel: 1-631-559-9269 1-516-512-3133

 Email: info@creative-biomart.com  Fax: 1-631-938-8127

 45-1 Ramsey Road, Shirley, NY 11967, USA