

Recombinant Human CRHBP Protein (Tyr25-Leu322), C-His tagged

Cat. No. CRHBP-1807H Lot. No. (See product label)

SPECIFICATION

Product Overview	Recombinant human CRHBP (Tyr25-Leu322) fused with C-terminal His tag was expressed in Mammalian cells.
Species	Human
Source	Mammalian Cells
ProteinLength	Tyr25-Leu322
Form	Lyophilized powder/frozen liquid
Molecular Mass	32.78 kDa
Purity	>90% as determined by SDS-PAGE
Notes	For research use only.
Storage	Use a manual defrost freezer and avoid repeated freeze thaw cycles. Store at 2 to 8 centigrade for one week. Store at -20 to -80 centigrade for twelve months from the date of receipt.
Storage Buffer	Supplied as solution form in PBS or lyophilized from PBS.
Reconstitution	Reconstitute in sterile water for a stock solution.

 Tel: 1-631-559-9269 1-516-512-3133

 Email: info@creative-biomart.com  Fax: 1-631-938-8127

 45-1 Ramsey Road, Shirley, NY 11967, USA

Shipping They are shipped out with dry ice/blue ice unless customers require otherwise.

GENE INFORMATION

Gene Name CRHBP corticotropin releasing hormone binding protein [Homo sapiens (human)]

Official Symbol CRHBP

Synonyms CRHBP; corticotropin releasing hormone binding protein; corticotropin-releasing factor-binding protein; CRF BP; CRFBP; CRH-BP; CRF-binding protein; corticotropin releasing hormone-binding protein; corticotropin-releasing hormone-binding protein; CRF-BP;

Gene ID 1393

mRNA Refseq NM_001882

Protein Refseq NP_001873

MIM 122559

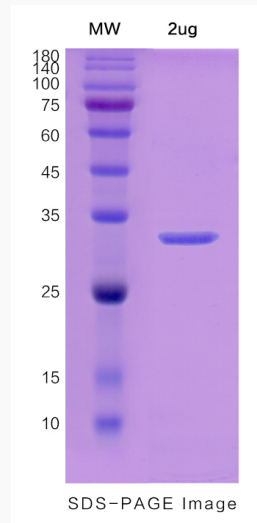
UniProt ID P24387

 Tel: 1-631-559-9269 1-516-512-3133

 Email: info@creative-biomart.com  Fax: 1-631-938-8127

 45-1 Ramsey Road, Shirley, NY 11967, USA

SDS-PAGE



 Tel: 1-631-559-9269 1-516-512-3133

 Email: info@creative-biomart.com  Fax: 1-631-938-8127

 45-1 Ramsey Road, Shirley, NY 11967, USA