

Recombinant Human CRHBP Protein, GST-tagged

Cat. No. CRHBP-1865H Lot. No. (See product label)

SPECIFICATION

Product Overview	Human CRHBP full-length ORF (AAH18038, 1 a.a. - 322 a.a.) recombinant protein with GST-tag at N-terminal.
Species	Human
Source	Wheat Germ
Description	Corticotropin-releasing hormone is a potent stimulator of synthesis and secretion of preopiomelanocortin-derived peptides. Although CRH concentrations in the human peripheral circulation are normally low, they increase throughout pregnancy and fall rapidly after parturition. Maternal plasma CRH probably originates from the placenta. Human plasma contains a CRH-binding protein which inactivates CRH and which may prevent inappropriate pituitary-adrenal stimulation in pregnancy. [provided by RefSeq, Jul 2008]
Molecular Mass	61.16 kDa
AA Sequence	MSPNFKLQCHFILIFLTALRGESRYLELREAADYDPFLLFSANLKRELAGEQPYRRAL RCLDMLSLQGQFTFTADRPQLHCAAFFISEPEEFITIHVDQVSIDCQGGDFLKVFDG WILKGEKFPSSQDHPLPSAERYIDFCESGLSRRSIRSSQNVAMIFFRVHEPGNGFTL TIKTDPNLFPCNVISQTPNGKFTLVVPHQHRNCSFSIIYPVVIKISDLTLGHVNGLQLKK SSAGCEGIGDFVELLGGTGLDPSKMTPLADLCYPFHGPAQMKGCDNTVVRMVSS GKHVNRVTFEYRQLEPYELENPNGNSIGEFCLSGL
Applications	Enzyme-linked Immunoabsorbent Assay

 Tel: 1-631-559-9269 1-516-512-3133

 Email: info@creative-biomart.com  Fax: 1-631-938-8127

 45-1 Ramsey Road, Shirley, NY 11967, USA

	Western Blot (Recombinant protein) Antibody Production Protein Array
Notes	Best use within three months from the date of receipt of this protein.
Storage	Store at -80 centigrade. Aliquot to avoid repeated freezing and thawing.
Storage Buffer	50 mM Tris-HCl, 10 mM reduced Glutathione, pH=8.0 in the elution buffer.
GENE INFORMATION	
Gene Name	CRHBP corticotropin releasing hormone binding protein [Homo sapiens]
Official Symbol	CRHBP
Synonyms	CRHBP; corticotropin releasing hormone binding protein; corticotropin-releasing factor-binding protein; CRF BP; CRFBP; CRH-BP; CRF-binding protein; corticotropin releasing hormone-binding protein; corticotropin-releasing hormone-binding protein; CRF-BP;
Gene ID	1393
mRNA Refseq	NM_001882
Protein Refseq	NP_001873
MIM	122559
UniProt ID	P24387

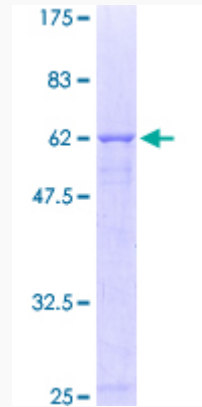
 Tel: 1-631-559-9269 1-516-512-3133

 Email: info@creative-biomart.com  Fax: 1-631-938-8127

 45-1 Ramsey Road, Shirley, NY 11967, USA

Quality Control

Testing:



12.5% SDS-PAGE Stained with Coomassie Blue.

 Tel: 1-631-559-9269 1-516-512-3133

 Email: info@creative-biomart.com  Fax: 1-631-938-8127

 45-1 Ramsey Road, Shirley, NY 11967, USA