

# Recombinant Full Length Human CRHBP Protein, C-Flag-tagged

**Cat. No.** CRHBP-866HFL    **Lot. No.** (See product label)

## SPECIFICATION

<b>Product Overview</b>	Recombinant Full Length Human CRHBP Protein, fused to Flag-tag at C-terminus, was expressed in Mammalian cells.
<b>Species</b>	Human
<b>Source</b>	Mammalian Cells
<b>Description</b>	Corticotropin-releasing hormone is a potent stimulator of synthesis and secretion of preopiomelanocortin-derived peptides. Although CRH concentrations in the human peripheral circulation are normally low, they increase throughout pregnancy and fall rapidly after parturition. Maternal plasma CRH probably originates from the placenta. Human plasma contains a CRH-binding protein which inactivates CRH and which may prevent inappropriate pituitary-adrenal stimulation in pregnancy.
<b>Form</b>	25 mM Tris HCl, pH 7.3, 100 mM glycine, 10% glycerol.
<b>Molecular Mass</b>	36 kDa
<b>AA Sequence</b>	MSPNFKLQCHFILIFLTALRGESRYLELREAADYDPFLLFSANLKRELAGEQPYRRAL RCLDMLSLQGQF TFTADRPQLHCAAFFISEPEEFITIHVDQVSDCQGGDFLKVFDG WILKGEKFPSSQDHPLPSAERYIDF CESGLSRRSIRSSQNVAMIFFRVHEPGNGFTL TIKTDPNLFPNCVISQTPNGKFTLVVPHQHRNCSFSII YPVVIKISDLTLGHVNGLQLK KSSAGCEGIGDFVELLGGTGLDPSKMTPLADLCYPFHGPAQMKVGCNT VVRMVSSGKHVNRVTFEYRQLEPYELENPNGNSIGEFCLSGLTRTRPLEQKLISEED

 Tel: 1-631-559-9269    1-516-512-3133

 Email: [info@creative-biomart.com](mailto:info@creative-biomart.com)     Fax: 1-631-938-8127

 45-1 Ramsey Road, Shirley, NY 11967, USA

LAANDILDYKDDDDKV

**Purity** > 80% as determined by SDS-PAGE and Coomassie blue staining.

**Stability** Stable for 12 months from the date of receipt of the product under proper storage and handling conditions. Avoid repeated freeze-thaw cycles.

**Storage** Store at -80 centigrade.

**Concentration** >50 ug/mL as determined by microplate BCA method.

**Preparation** Recombinant protein was captured through anti-DDK affinity column followed by conventional chromatography steps.

**Full Length** Full L.

## GENE INFORMATION

**Gene Name** [CRHBP corticotropin releasing hormone binding protein \[ Homo sapiens \(human\) \]](#)

**Official Symbol** [CRHBP](#)

**Synonyms** CRFBP; CRF-BP

**Gene ID** [1393](#)

**mRNA Refseq** [NM\\_001882.4](#)

**Protein Refseq** [NP\\_001873.2](#)

**MIM** [122559](#)

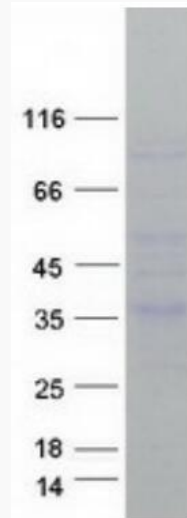
 Tel: 1-631-559-9269 1-516-512-3133

 Email: [info@creative-biomart.com](mailto:info@creative-biomart.com)  Fax: 1-631-938-8127

 45-1 Ramsey Road, Shirley, NY 11967, USA

UniProt ID

P24387



Coomassie blue staining of purified CRHBP protein.

 Tel: 1-631-559-9269 1-516-512-3133

 Email: [info@creative-biomart.com](mailto:info@creative-biomart.com)  Fax: 1-631-938-8127

 45-1 Ramsey Road, Shirley, NY 11967, USA