

Recombinant Human CRHR1 Protein, GST-tagged

Cat. No. CRHR1-1867H Lot. No. (See product label)

SPECIFICATION

Product Overview	Human CRHR1 full-length ORF (NP_004373.2, 1 a.a. - 415 a.a.) recombinant protein with GST-tag at N-terminal.
Species	Human
Source	Wheat Germ
Description	This gene encodes a G-protein coupled receptor that binds neuropeptides of the corticotropin releasing hormone family that are major regulators of the hypothalamic-pituitary-adrenal pathway. The encoded protein is essential for the activation of signal transduction pathways that regulate diverse physiological processes including stress, reproduction, immune response and obesity. Alternative splicing results in multiple transcript variants. Naturally-occurring readthrough transcription between this gene and upstream GeneID:147081 results in transcripts that encode isoforms that share similarity with the products of this gene. [provided by RefSeq, Aug 2016]
Molecular Mass	74.1 kDa
AA Sequence	MGGHPQLRLVKALLLGLNPVSASLQDQHCELSLASNISGLQCNASVDLIGTCWPR SPAGQLVVRPCPAFFYGVRYNNTTNGYRECLANGSWAARVNYSECQEILNEEKKS KVHYHVAVIINYLGHCISLVALLVAFVLFRLRLRSIRCLRNIIHWNLISAFILRNATWVFVQ LTMSPEVHQSNVGCRLVTAAYNYFHVTNFFWMFGEGCYLHTAIVLTYSTDRLRK WMFICIGWGVFPPIIWAWAIGKLYDNEKCFWFGKRPVYTDYIYQGPMILVLLINFIL FNIVRILMTKLRASTTSETIQYRKAVKATLVLLPLLGITYMLFFVNPGEDEVSRVVFYF

 Tel: 1-631-559-9269 1-516-512-3133

 Email: info@creative-biomart.com  Fax: 1-631-938-8127

 45-1 Ramsey Road, Shirley, NY 11967, USA

NSFLESFQGGFFVSVFYCFLNSEVRSAIRKRWHRWQDKHSIRARVARAMSIPTSPTRV
SFHSIKQSTAV

Applications
Enzyme-linked Immunoabsorbent Assay
Western Blot (Recombinant protein)
Antibody Production
Protein Array

Notes
Best use within three months from the date of receipt of this protein.

Storage
Store at -80 centigrade. Aliquot to avoid repeated freezing and thawing.

Storage Buffer
50 mM Tris-HCl, 10 mM reduced Glutathione, pH=8.0 in the elution buffer.

GENE INFORMATION

Gene Name
[CRHR1 corticotropin releasing hormone receptor 1 \[Homo sapiens \]](#)

Official Symbol
[CRHR1](#)

Synonyms
CRHR1; corticotropin releasing hormone receptor 1; CRHR; corticotropin-releasing factor receptor 1; corticotropin releasing factor receptor; CRF R; CRF1; seven transmembrane helix receptor; corticotropin-releasing hormone receptor 1; corticotropin-releasing factor type 1 receptor; corticotropin releasing hormone receptor variant 1e; corticotropin releasing hormone receptor variant 1g; CRF-R; CRFR1; CRF-R1; CRFR-1; CRH-R1; CRHR1L; CRHR1f; CRF-R-1; CRH-R-1; CRH-R1h;

Gene ID
[1394](#)

mRNA Refseq
[NM_001145146](#)

 Tel: 1-631-559-9269 1-516-512-3133

 Email: info@creative-biomart.com  Fax: 1-631-938-8127

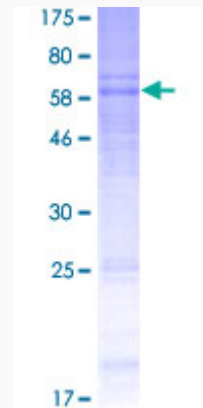
 45-1 Ramsey Road, Shirley, NY 11967, USA

Protein Refseq NP_001138618

MIM 122561

UniProt ID P34998

**Quality Control
Testing:**



12.5% SDS-PAGE Stained with Coomassie Blue.

 Tel: 1-631-559-9269 1-516-512-3133

 Email: info@creative-biomart.com  Fax: 1-631-938-8127

 45-1 Ramsey Road, Shirley, NY 11967, USA