

Recombinant Human CRHR1 Protein (24-121 aa), GST-tagged

Cat. No. CRHR1-424H **Lot. No.** (See product label)

SPECIFICATION

Product Overview Recombinant Human CRHR1 Protein (24-121 aa) is produced by E. coli expression system. This protein is fused with a GST tag at the N-terminal. Research Area: Neuroscience. Protein Description: Partial.

Species Human

Source E.coli

ProteinLength 24-121 aa

Description G-protein coupled receptor for CRH (corticotropin-releasing factor) and UCN (urocortin). Has high affinity for CRH and UCN. Ligand binding causes a conformation change that triggers signaling via guanine nucleotide-binding proteins (G proteins) and down-stream effectors, such as adenylate cyclase. Promotes the activation of adenylate cyclase, leading to increased intracellular cAMP levels. Inhibits the activity of the calcium channel CACNA1H. Required for normal bryonic development of the adrenal gland and for normal hormonal responses to stress. Plays a role in the response to anxiogenic stimuli.

Form Tris-based buffer, 50% glycerol

Molecular Mass 37.9 kDa

AA Sequence SLQDQHCESLSLASNISGLQCNASVDLIGTCWPRSPAGQLVVRPCPAFFYGVRVYNT
TNNGYRECLANGSWAARVNYSECQEILNEEKSKVHYHVAVI

 Tel: 1-631-559-9269 1-516-512-3133

 Email: info@creative-biomart.com  Fax: 1-631-938-8127

 45-1 Ramsey Road, Shirley, NY 11967, USA

Purity	> 90% as determined by SDS-PAGE.
Notes	Repeated freezing and thawing is not recommended. Store working aliquots at 4 centigrade for up to one week.
Storage	The shelf life is related to many factors, storage state, buffer ingredients, storage temperature and the stability of the protein itself. Generally, the shelf life of liquid form is 6 months at -20 centigrade/-80 centigrade. The shelf life of lyophilized form is 12 months at -20 centigrade/-80 centigrade.
Concentration	A hardcopy of COA with concentration instruction is sent along with the products.

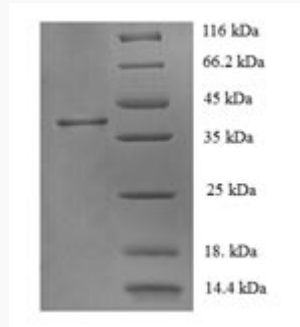
GENE INFORMATION

Gene Name	CRHR1 corticotropin releasing hormone receptor 1 [Homo sapiens]
Official Symbol	CRHR1
Synonyms	CRHR1; CRHR; CRF R; CRF1; CRF-R; CRFR1; CRF-R1; CRFR-1; CRH-R1; CRHR1L; CRHR1f; CRF-R-1; CRH-R-1; CRH-R1h;
Gene ID	1394
mRNA Refseq	NM_001145146
Protein Refseq	NP_001138618
MIM	122561
UniProt ID	P34998

 Tel: 1-631-559-9269 1-516-512-3133

 Email: info@creative-biomart.com  Fax: 1-631-938-8127

 45-1 Ramsey Road, Shirley, NY 11967, USA



(Tris-Glycine gel) Discontinuous SDS-PAGE (reduced) with 5% enrichment gel and 15% separation gel.

 Tel: 1-631-559-9269 1-516-512-3133

 Email: info@creative-biomart.com  Fax: 1-631-938-8127

 45-1 Ramsey Road, Shirley, NY 11967, USA