

## Recombinant Human CRHR2 Protein (Glu20-Lys108), N-His tagged

Cat. No. CRHR2-1809H Lot. No. (See product label)

### SPECIFICATION

<b>Product Overview</b>	Recombinant human CRHR2 (Glu20-Lys108) fused with N-His tag was expressed in E. coli.
<b>Species</b>	Human
<b>Source</b>	E.coli
<b>ProteinLength</b>	Glu20-Lys108
<b>Form</b>	Lyophilized powder/frozen liquid
<b>Molecular Mass</b>	12.43 kDa
<b>Purity</b>	>90% as determined by SDS-PAGE
<b>Notes</b>	For research use only.
<b>Storage</b>	Use a manual defrost freezer and avoid repeated freeze thaw cycles. Store at 2 to 8 centigrade for one week. Store at -20 to -80 centigrade for twelve months from the date of receipt.
<b>Storage Buffer</b>	0.01M PBS, pH 7.4, 0.02% NLS
<b>Reconstitution</b>	Reconstitute in sterile water for a stock solution.

 Tel: 1-631-559-9269 1-516-512-3133

 Email: [info@creative-biomart.com](mailto:info@creative-biomart.com)  Fax: 1-631-938-8127

 45-1 Ramsey Road, Shirley, NY 11967, USA

**Shipping**

They are shipped out with dry ice/blue ice unless customers require otherwise.

**GENE INFORMATION**
**Gene Name**

CRHR2 corticotropin releasing hormone receptor 2 [ Homo sapiens (human) ]

**Official Symbol**

CRHR2

**Synonyms**

CRHR2; corticotropin releasing hormone receptor 2; corticotropin-releasing factor receptor 2; CRF RB; CRF2; HM CRF; CRH-R2; CRF2 receptor, beta isoform; CRFR2; CRF-RB; HM-CRF;

**Gene ID**

1395

**mRNA Refseq**

NM\_001202475

**Protein Refseq**

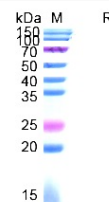
NP\_001189404

**MIM**

602034

**UniProt ID**

Q13324

**SDS-PAGE**


 Tel: 1-631-559-9269 1-516-512-3133

 Email: [info@creative-biomart.com](mailto:info@creative-biomart.com)  Fax: 1-631-938-8127

 45-1 Ramsey Road, Shirley, NY 11967, USA