

## Recombinant Human CRHR2 Protein, GST-tagged

Cat. No. CRHR2-1870H Lot. No. (See product label)

### SPECIFICATION

<b>Product Overview</b>	Human CRHR2 full-length ORF ( NP_001874.2, 1 a.a. - 411 a.a.) recombinant protein with GST-tag at N-terminal.
<b>Species</b>	Human
<b>Source</b>	Wheat Germ
<b>Description</b>	The protein encoded by this gene belongs to the G-protein coupled receptor 2 family, and the subfamily of corticotropin releasing hormone receptor. This receptor shows high affinity for corticotropin releasing hormone (CRH), and also binds CRH-related peptides such as urocortin. CRH is synthesized in the hypothalamus, and plays an important role in coordinating the endocrine, autonomic, and behavioral responses to stress and immune challenge. Studies in mice suggest that this receptor maybe involved in mediating cardiovascular homeostasis. Alternatively spliced transcript variants encoding different isoforms have been described for this gene.[provided by RefSeq, Jan 2011]
<b>Molecular Mass</b>	74.1 kDa
<b>AA Sequence</b>	MDAALLHSLLEANCSLALAEELLLDGGWGPPLDPEGPYSYCNTTLDQIGTCWPRSAA GALVERPCPEYFNGVKYNTTRNAYRECLENGTWASKINYSQCEPILDDKQRKYDLH YRIALVVNYLGHCVSVAALVAAFLLFLALRSIRCLRNVIHWNLITTFILRNVMWFLQLV DHEVHESNEVWCRCITTIFNYFVVTNFFWMFVEGCYLHTAIVMTYSTERLRKCLFLFI GWCIPFPIIWAWAIGKLYYENEQCWFGKEPGDLVDYIYQGPIILVLLINFVFLFNIVRILM

Tel: 1-631-559-9269 1-516-512-3133

Email: [info@creative-biomart.com](mailto:info@creative-biomart.com) Fax: 1-631-938-8127

45-1 Ramsey Road, Shirley, NY 11967, USA

TKLRASTTSETIQYRKAVKATLVLLPLLGITVYMLFFVNPGEDDLSQLMFIYFNSFLQSF  
 QGFFVSVFYCFNNGEVRS AVRKRWHRWQDHHSLRVP MARAMSIPTSPTRISFHSIK  
 QTA AV

<b>Applications</b>	Enzyme-linked Immunoabsorbent Assay Western Blot (Recombinant protein) Antibody Production Protein Array
<b>Notes</b>	Best use within three months from the date of receipt of this protein.
<b>Storage</b>	Store at -80 centigrade. Aliquot to avoid repeated freezing and thawing.
<b>Storage Buffer</b>	50 mM Tris-HCl, 10 mM reduced Glutathione, pH=8.0 in the elution buffer.

## GENE INFORMATION

<b>Gene Name</b>	CRHR2 corticotropin releasing hormone receptor 2 [ Homo sapiens ]
<b>Official Symbol</b>	CRHR2
<b>Synonyms</b>	CRHR2; corticotropin releasing hormone receptor 2; corticotropin-releasing factor receptor 2; CRF RB; CRF2; HM CRF; CRH-R2; CRF2 receptor, beta isoform; CRFR2; CRF-RB; HM-CRF;
<b>Gene ID</b>	1395
<b>mRNA Refseq</b>	NM_001202475
<b>Protein Refseq</b>	NP_001189404

 Tel: 1-631-559-9269 1-516-512-3133

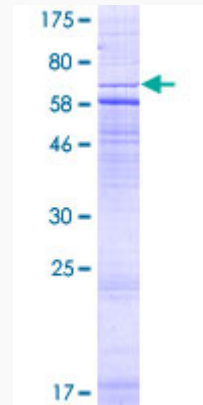
 Email: [info@creative-biomart.com](mailto:info@creative-biomart.com)  Fax: 1-631-938-8127

 45-1 Ramsey Road, Shirley, NY 11967, USA

**MIM** 602034

**UniProt ID** Q13324

**Quality Control  
Testing:**



12.5% SDS-PAGE Stained with Coomassie Blue.

 Tel: 1-631-559-9269 1-516-512-3133

 Email: [info@creative-biomart.com](mailto:info@creative-biomart.com)  Fax: 1-631-938-8127

 45-1 Ramsey Road, Shirley, NY 11967, USA