

Recombinant Human CRIM1 Protein, GST-tagged

Cat. No. CRIM1-1873H **Lot. No.** (See product label)

SPECIFICATION

Product Overview	Human CRIM1 partial ORF (NP_057525, 36 a.a. - 145 a.a.) recombinant protein with GST-tag at N-terminal.
Species	Human
Source	Wheat Germ
Description	This gene encodes a transmembrane protein containing six cysteine-rich repeat domains and an insulin-like growth factor-binding domain. The encoded protein may play a role in tissue development through interactions with members of the transforming growth factor beta family, such as bone morphogenetic proteins. [provided by RefSeq, Nov 2010]
Molecular Mass	37.84 kDa
AA Sequence	VCLPCDESKCEEPRNCPGSIVQGVCGCCYTCASQRNESC GGTFGIYGTCDRGLRC VIRPPLNGDSLTEYEAGVCE DENWTD DQLLGFKPCNENLIAGCNIINGKCECNTI
Applications	Enzyme-linked Immunoabsorbent Assay Western Blot (Recombinant protein) Antibody Production Protein Array
Notes	Best use within three months from the date of receipt of this protein.

 Tel: 1-631-559-9269 1-516-512-3133

 Email: info@creative-biomart.com  Fax: 1-631-938-8127

 45-1 Ramsey Road, Shirley, NY 11967, USA

Storage Store at -80 centigrade. Aliquot to avoid repeated freezing and thawing.

Storage Buffer 50 mM Tris-HCl, 10 mM reduced Glutathione, pH=8.0 in the elution buffer.

GENE INFORMATION

Gene Name CRIM1 reserved [Homo sapiens]

Official Symbol CRIM1

Synonyms CRIM1; reserved;

Gene ID 51232

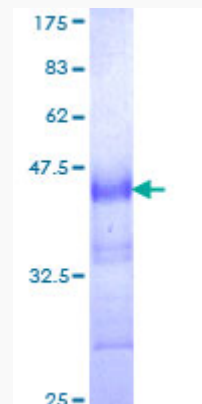
mRNA Refseq NM_016441

Protein Refseq NP_057525

MIM 606189

UniProt ID Q9NZV1

Quality Control Testing:



 Tel: 1-631-559-9269 1-516-512-3133

 Email: info@creative-biomart.com  Fax: 1-631-938-8127

 45-1 Ramsey Road, Shirley, NY 11967, USA



12.5% SDS-PAGE Stained with Coomassie Blue.

 Tel: 1-631-559-9269 1-516-512-3133

 Email: info@creative-biomart.com  Fax: 1-631-938-8127

 45-1 Ramsey Road, Shirley, NY 11967, USA