

## Recombinant Human CRIP1 Protein, GST-tagged

Cat. No. CRIP1-1874H Lot. No. (See product label)

### SPECIFICATION

<b>Product Overview</b>	Human CRIP1 full-length ORF ( AAH02738, 1 a.a. - 77 a.a.) recombinant protein with GST-tag at N-terminal.
<b>Species</b>	Human
<b>Source</b>	Wheat Germ
<b>Description</b>	Cysteine-rich intestinal protein (CRIP) belongs to the LIM/double zinc finger protein family, members of which include cysteine- and glycine-rich protein-1 (CSRP1; MIM 123876), rhombotin-1 (RBTN1; MIM 186921), rhombotin-2 (RBTN2; MIM 180385), and rhombotin-3 (RBTN3; MIM 180386). CRIP may be involved in intestinal zinc transport (Hempe and Cousins, 1991 [PubMed 1946385]).[supplied by OMIM, Mar 2008]
<b>Molecular Mass</b>	34.21 kDa
<b>AA Sequence</b>	MPKCPKCNKEVYFAERVTSLGKDWHRPCLKCEKCGKTLTSGGHAEHEGKPYCNHP CYAAMFGPKGFGRGGAESHTFK
<b>Applications</b>	Enzyme-linked Immunoabsorbent Assay Western Blot (Recombinant protein) Antibody Production Protein Array
<b>Notes</b>	Best use within three months from the date of receipt of this protein.

 Tel: 1-631-559-9269 1-516-512-3133

 Email: [info@creative-biomart.com](mailto:info@creative-biomart.com)  Fax: 1-631-938-8127

 45-1 Ramsey Road, Shirley, NY 11967, USA

**Storage** Store at -80 centigrade. Aliquot to avoid repeated freezing and thawing.

**Storage Buffer** 50 mM Tris-HCl, 10 mM reduced Glutathione, pH=8.0 in the elution buffer.

## GENE INFORMATION

**Gene Name** CRIP1 cysteine-rich protein 1 (intestinal) [ Homo sapiens ]

**Official Symbol** CRIP1

**Synonyms** CRIP1; cysteine-rich protein 1 (intestinal); cysteine-rich protein 1; CRIP; cysteine-rich heart protein; cysteine-rich intestinal protein; CRHP; CRP1; CRP-1; FLJ40971;

**Gene ID** 1396

**mRNA Refseq** NM\_001311

**Protein Refseq** NP\_001302

**MIM** 123875

**UniProt ID** P50238

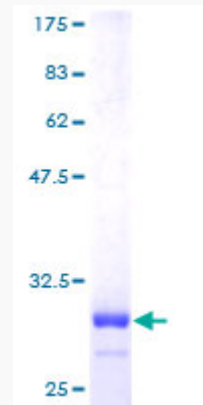
 Tel: 1-631-559-9269 1-516-512-3133

 Email: [info@creative-biomart.com](mailto:info@creative-biomart.com)  Fax: 1-631-938-8127

 45-1 Ramsey Road, Shirley, NY 11967, USA

**Quality Control**

**Testing:**



12.5% SDS-PAGE Stained with Coomassie Blue.

 Tel: 1-631-559-9269 1-516-512-3133

 Email: [info@creative-biomart.com](mailto:info@creative-biomart.com)  Fax: 1-631-938-8127

 45-1 Ramsey Road, Shirley, NY 11967, USA