

Recombinant Human CRIP1 Protein, Myc/DDK-tagged, C13 and N15-labeled

Cat. No. CRIP1-3776H **Lot. No.** (See product label)

SPECIFICATION

Product Overview	CRIP1 MS Standard C13 and N15-labeled recombinant protein (NP_001302) with a C-terminal MYC/DDK tag, was expressed in HEK293 cells.
Species	Human
Source	HEK293
Description	Cysteine-rich intestinal protein (CRIP) belongs to the LIM/double zinc finger protein family, members of which include cysteine- and glycine-rich protein-1 (CSR1P), rhombotin-1 (RBTN1), rhombotin-2 (RBTN2), and rhombotin-3 (RBTN3). CRIP may be involved in intestinal zinc transport.
Molecular Mass	8.5 kDa
AA Sequence	MPKCPKCNKEVYFAERVTSLGKDWHRPCLKCEKCGKTLTSGGHAEHEGKPYCNHP CYAAMFGPKGFGRGGAESHTEFKTRTRPLEQKLISEEDLAANDILDYKDDDDKV
Purity	> 80% as determined by SDS-PAGE and Coomassie blue staining
Stability	Stable for 3 months from receipt of products under proper storage and handling conditions.
Storage	Store at -80 centigrade. Avoid repeated freeze-thaw cycles.

 Tel: 1-631-559-9269 1-516-512-3133

 Email: info@creative-biomart.com  Fax: 1-631-938-8127

 45-1 Ramsey Road, Shirley, NY 11967, USA

Concentration 50 µg/mL as determined by BCA

Storage Buffer 100 mM glycine, 25 mM Tris-HCl, pH 7.3.

GENE INFORMATION

Gene Name CRIP1 cysteine rich protein 1 [Homo sapiens (human)]

Official Symbol CRIP1

Synonyms CRIP1; cysteine-rich protein 1 (intestinal); cysteine-rich protein 1; CRIP; cysteine-rich heart protein; cysteine-rich intestinal protein; CRHP; CRP1; CRP-1; FLJ40971;

Gene ID 1396

mRNA Refseq NM_001311

Protein Refseq NP_001302

MIM 123875

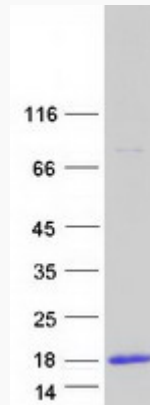
UniProt ID P50238

 Tel: 1-631-559-9269 1-516-512-3133

 Email: info@creative-biomart.com  Fax: 1-631-938-8127

 45-1 Ramsey Road, Shirley, NY 11967, USA

SDS-PAGE



 Tel: 1-631-559-9269 1-516-512-3133

 Email: info@creative-biomart.com  Fax: 1-631-938-8127

 45-1 Ramsey Road, Shirley, NY 11967, USA