

Recombinant Human CRIP2 Protein, GST-tagged

Cat. No. CRIP2-1875H Lot. No. (See product label)

SPECIFICATION

Product Overview	Human CRIP2 full-length ORF (NP_001303, 1 a.a. - 208 a.a.) recombinant protein with GST-tag at N-terminal.
Species	Human
Source	Wheat Germ
Description	This gene encodes a putative transcription factor with two LIM zinc-binding domains. The encoded protein may participate in the differentiation of smooth muscle tissue. Alternative splicing results in multiple transcript variants. [provided by RefSeq, Aug 2012]
Molecular Mass	48.51 kDa
AA Sequence	MASKCPKCDKTVYFAEKVSSLGKDWKFKLKCERCSTLTPGGHAEHDGKPFCHK PCYATLFGPKGVNIGGAGSYIYEKPLAEGPQVTGPIEVPAARAEERKASGPPKGPSR ASSVTTFTGEPNTCPRCSKKVYFAEKVTSLGKDWHRPCLRCERCCKTLTPGGHAE HDGQPYCHKPCYGILFGPKGVNTGAVGSYIYDRDPEGKVQP
Applications	Enzyme-linked Immunoabsorbent Assay Western Blot (Recombinant protein) Antibody Production Protein Array
Notes	Best use within three months from the date of receipt of this protein.

 Tel: 1-631-559-9269 1-516-512-3133

 Email: info@creative-biomart.com  Fax: 1-631-938-8127

 45-1 Ramsey Road, Shirley, NY 11967, USA

Storage Store at -80 centigrade. Aliquot to avoid repeated freezing and thawing.

Storage Buffer 50 mM Tris-HCl, 10 mM reduced Glutathione, pH=8.0 in the elution buffer.

GENE INFORMATION

Gene Name CRIP2 cysteine-rich protein 2 [Homo sapiens]

Official Symbol CRIP2

Synonyms CRIP2; cysteine-rich protein 2; CRP2; ESP1; CRP-2; Cystein-rich intestinal protein; CRIP;

Gene ID 1397

mRNA Refseq NM_001312

Protein Refseq NP_001303

MIM 601183

UniProt ID P52943

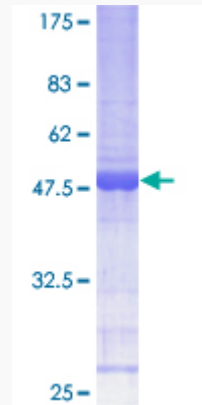
 Tel: 1-631-559-9269 1-516-512-3133

 Email: info@creative-biomart.com  Fax: 1-631-938-8127

 45-1 Ramsey Road, Shirley, NY 11967, USA

Quality Control

Testing:



12.5% SDS-PAGE Stained with Coomassie Blue.

 Tel: 1-631-559-9269 1-516-512-3133

 Email: info@creative-biomart.com  Fax: 1-631-938-8127

 45-1 Ramsey Road, Shirley, NY 11967, USA