

Recombinant Human CRIP2 Protein, Myc/DDK-tagged, C13 and N15-labeled

Cat. No. CRIP2-2769H **Lot. No.** (See product label)

SPECIFICATION

Product Overview	CRIP2 MS Standard C13 and N15-labeled recombinant protein (NP_001303) with a C-terminal MYC/DDK tag, was expressed in HEK293 cells.
Species	Human
Source	HEK293
Description	This gene encodes a putative transcription factor with two LIM zinc-binding domains. The encoded protein may participate in the differentiation of smooth muscle tissue. Alternative splicing results in multiple transcript variants.
Molecular Mass	22.5 kDa
AA Sequence	MASKCPKCDKTVYFAEKVSSLGKDWKFKLKCERCSKTLTPGGHAEHDGKPFCHK PCYATLFGPKGVNIGGAGSYIYEKPLAEGPQVTGPIEVPAARAEERKASGPPKGPSR ASSVTTFTGEPNTCPRCSKKVYFAEKVTSLGKDWHRPCLRCERCCKTLTPGGHAE HDGQPYCHKPCYGILFGPKGVNTGAVGSYIYDRDPEGKVQPTRTRPLEQKLISEEDL AANDILDYKDDDDKV
Purity	> 80% as determined by SDS-PAGE and Coomassie blue staining
Stability	Stable for 3 months from receipt of products under proper storage and handling conditions.

 Tel: 1-631-559-9269 1-516-512-3133

 Email: info@creative-biomart.com  Fax: 1-631-938-8127

 45-1 Ramsey Road, Shirley, NY 11967, USA

Storage	Store at -80 centigrade. Avoid repeated freeze-thaw cycles.
----------------	---

Concentration	50 µg/mL as determined by BCA
----------------------	-------------------------------

Storage Buffer	100 mM glycine, 25 mM Tris-HCl, pH 7.3.
-----------------------	---

GENE INFORMATION

Gene Name	CRIP2 cysteine-rich protein 2 [Homo sapiens (human)]
------------------	--

Official Symbol	CRIP2
------------------------	-------

Synonyms	CRIP2; cysteine-rich protein 2; CRP2; ESP1; CRP-2; Cystein-rich intestinal protein; CRIP;
-----------------	---

Gene ID	1397
----------------	------

mRNA Refseq	NM_001312
--------------------	-----------

Protein Refseq	NP_001303
-----------------------	-----------

MIM	601183
------------	--------

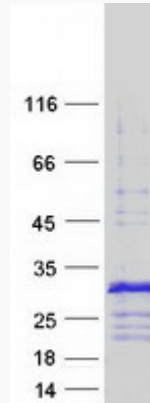
UniProt ID	P52943
-------------------	--------

 Tel: 1-631-559-9269 1-516-512-3133

 Email: info@creative-biomart.com  Fax: 1-631-938-8127

 45-1 Ramsey Road, Shirley, NY 11967, USA

SDS-PAGE



 Tel: 1-631-559-9269 1-516-512-3133

 Email: info@creative-biomart.com  Fax: 1-631-938-8127

 45-1 Ramsey Road, Shirley, NY 11967, USA